



ARTERO
PETCARE

2024/
CATALOG
USA

Inspiring Style

artero.com



Index

01_Cosmetics	05	04_Fashion	61
01.1_Shampoos	06	04.1_Tops & Bottoms	62
01.2_Conditioners	10	04.2_Aprons	66
01.3_Spray Conditioners	12	05_Clippers	67
01.4_Hold and Volume	14	05.1_A5	68
01.5_Perfumes	16	05.2_Trimmers	70
01.6_Hygiene and Health	18	05.3_Detailers	71
01.7_Coloring, Chalks and Sprays	22	05.4_Blades and Snap-on Combs	73
01.8_4Cats	24	05.5_Accessories	76
02_Tools NATURE COLLECTION	29	06_Scissors	77
02.1_Combs	30	06.1_Razor Edge Scissors	80
02.2_Slickers and Brushes	33	06.2_Micro-Serrated Scissors	83
02.3_Undercoat, Mats and Shedding	40	06.3_Curved Scissors	85
02.4_Rubber Gloves	43	06.4_Chunkers	89
02.5_Hygiene	44	06.5_Thinning Scissors	92
02.6_Stripping	46	06.6_Lefties	95
03_Tools	49	07_Holders and Cases	99
03.1_Tools	50	07.1_Holders	100
03.2_Model Dogs	55	07.2_Cases	102
03.3_Bathing	57		
03.4_Table mats	59		
03.5_Muzzles	60		



Cosmetics

01



Artero Cosmetics combine the experience of a century-old grooming company, along with the collaboration of top dog groomers to create a professional line that covers all your grooming needs. Made with top-quality ingredients, respectful to the environment and 100% Made in Spain.





COSMETICS

01.1 Shampoos

A very concentrated, top-quality line designed to thoroughly clean while caring for the coat and skin



Tsunami

Degrease shampoo that is gentle on the skin.

EFFECT: Deep cleansing, degreaser, removes dirt and stains.
USE: Use as a first application to remove dirt, stains, bad odors, etc. Prepares the coat for second applications of shampoo.
FEATURED INGREDIENT: Vinegar.
INSTRUCTIONS FOR USE: Massage into wet coat to achieve a lather. Rinse immediately.
COMBINES WITH: All shampoos except Basic.

3.3 OZ. REF.: H5764
 9 OZ. REF.: H764
 180 OZ. REF.: H764



Hidratante

The shampoo for long-haired breeds.

EFFECT: Highly moisturizing for a flowing coat.
USE: On long coated breeds to prevent breakage, on dry or damaged coats.
FEATURED INGREDIENT: Biotin.
INSTRUCTIONS FOR USE: Massage well into wet coat to achieve a lather. Wait 3 to 5 minutes and rinse.
COMBINE WITH: Keratin and Protein Conditioners.

3.3 OZ. REF.: H5624
 9 OZ. REF.: H624
 180 OZ. REF.: H625



Vitalizante

The volumizer for wire & curly coats.

EFFECT: Adds texture and vitality.
USE: On wire-haired breeds, wavy or curly coats and double coats.
FEATURED INGREDIENT: Vitamins A, B, H.
INSTRUCTIONS FOR USE: Massage well into wet coat to achieve a lather. Wait 3 to 5 minutes and rinse.
COMBINE WITH: Protein Vital Conditioner and Detox Mask Conditioner.

3.3 OZ. REF.: H5622
 9 OZ. REF.: H622
 180 OZ. REF.: H623



Blanc

The shampoo for white coats.

EFFECT: Enhances white coats and removes yellow tones, intensifies black coats and evens out grey tones.
USE: On white coats but can also be used on black and grey dogs to improve color.
FEATURED INGREDIENT: Blue pigment.
INSTRUCTIONS FOR USE: Massage well into wet coat to achieve a lather. Wait 3 to 5 minutes and rinse.
COMBINE WITH: Keratin Conditioner, Detox Mask Conditioner and Protein Conditioner.

3.3 OZ. REF.: H5648
 9 OZ. REF.: H648
 180 OZ. REF.: H649



Detox

The extreme cleansing, anti-toxin shampoo.

EFFECT: Deeply cleanses and deodorizes, eliminates toxins and impurities. Whitens.
USE: On dirty or smelly, city cats and dogs or as a whitener.
FEATURED INGREDIENT: Activated Charcoal.
INSTRUCTIONS FOR USE: Massage well into wet coat to achieve a lather. Wait 3 to 5 minutes and rinse.
COMBINE WITH: Detox Mask Conditioner.

3.3 OZ. REF.: H5712
 9 OZ. REF.: H712
 180 OZ. REF.: H715





Bye Bye

The antiseptic and antiparasitic shampoo.

EFFECT: Antiseptic, antifungal and antiparasitic.
USE: Treats damaged skin, black skin, irritated skin and kills fleas.
FEATURED INGREDIENT: Tea Tree Oil.
INSTRUCTIONS FOR USE: Massage well into wet coat to achieve a lather. Wait 3 to 5 minutes and rinse.
COMBINE WITH: Spa Mask Conditioner.

3.3 OZ. REF.: H5666
 9 OZ. REF.: H666
 180 OZ. REF.: H668



Relax

The shampoo for sensitive and irritated skin.

EFFECT: Calming effect, reduces inflammation, restores and soothes the skin.
USE: On red, irritated, inflamed, dry and itchy skin.
FEATURED INGREDIENT: Rosehip Oil and Aloe Vera.
INSTRUCTIONS FOR USE: Massage well into wet coat to achieve a lather. Wait 3 to 5 minutes and rinse.
COMBINE WITH: Spa Mask Conditioner.

3.3 OZ. REF.: H5665
 9 OZ. REF.: H665
 180 OZ. REF.: H667



Basic

The ideal shampoo for that first cleanse.

EFFECT: Removes dirt and grease while respecting the skin.
USE: First bath for all cats and dogs.
FEATURED INGREDIENT: Oats.
INSTRUCTIONS FOR USE: Massage well into wet coat to achieve a lather. Rinse.
COMBINE WITH: Hidratante Shampoo, Vitalizante Shampoo, Blanc Shampoo, Detox Shampoo.

3.3 OZ. REF.: H5635
 180 OZ. REF.: H635



Baby

The kindest puppy shampoo.

EFFECT: Removes dirt and unpleasant odors while being very gentle on eyes and mucous membranes.
USE: Puppies and kittens.
FEATURED INGREDIENT: Talc.
INSTRUCTIONS FOR USE: Massage well into wet coat to achieve a lather. Wait 3 to 5 minutes and rinse.
COMBINE WITH: Spa Vital Conditioner and Protein Vital Conditioner.

3.3 OZ. REF.: H5664
 9 OZ. REF.: H664



Shampoo Display

H712: 1 DETOX 9 OZ.
 H624: 1 HIDRATANTE 9 OZ.
 H622: 1 VITALIZANTE 9 OZ.
 H648: 1 BLANC 9 OZ.
 H666: 1 BYE BYE 9 OZ.
 H665: 1 RELAX 9 OZ.
 H664: 1 BABY 9 OZ.
 H657: 1 4CATS 9 OZ.

SIZE / DIMENSIONS:
HEIGHT: 10.63"
WIDE: 9.84"
DEPTH: 14.17"

REF.: H742





COSMETICS

01.2 Conditioners

The Artero conditioners rehydrate, regenerate and protect all coat types



Kubic

Hydration and volume all at once.

EFFECT: Provides volume, body and hydration to the coat. Eases combing.

USE: For dogs that are lacking volume and hydration. Ideal in daily grooming to help cut curly or wavy coats, terriers' paws, etc.

FEATURED INGREDIENT: Low molecular weight keratin.

HOW TO USE: Apply to wet coat after bathing, massage well, then dry. It is not necessary to brush during drying. Do not rinse.

USE WITH: Vitalizing and Blanc.

16.91 OZ. REF.: H761



Keratin Vital

The conditioner for long or damaged hair.

EFFECT: Restores keratin, anti-breakage, adds weight, provides thermal protection.

USE: On long or damaged coats to prevent breakage, or before using flat irons.

FEATURED INGREDIENT: Keratin.

INSTRUCTIONS FOR USE: Apply liberally over damp coat. Wait 3 to 5 minutes and rinse, or leave in for more protection.

COMBINE WITH: Hidratante Shampoo, Blanc Shampoo and Detox Shampoo.

3.46 OZ. REF.: H672
22.5 OZ. REF.: H659



Protein Vital

The all-round conditioner.

EFFECT: Strengthens, helps with brushing and prevents tangles, moisturizes to restore hair elasticity and natural volume.

USE: To condition, on knotted and tangled cats and dogs with a dull coat.

FEATURED INGREDIENT: Silk Proteins.

INSTRUCTIONS FOR USE: Apply liberally over damp coat. Wait 3 to 5 minutes and rinse, or leave in for more protection.

COMBINE WITH: Vitalizante Shampoo and Blanc Shampoo.

3.46 OZ. REF.: H626
22.5 OZ. REF.: H630



Detox Vital

Moisturizing mask for lifeless coats.

EFFECT: Provides long-lasting hydration and removes dirt particles.

USE: On dirty, greasy or grimy coats of cats and dogs of any color.

FEATURED INGREDIENT: Activated Charcoal.

INSTRUCTIONS FOR USE: Apply liberally over damp coat. Wait 3 to 5 minutes and rinse. Not a leave in.

COMBINE WITH: Detox Shampoo and Blanc.

3.46 OZ. REF.: H727
22.5 OZ. REF.: H714



Spa Vital Mask

Conditioning mask – extra gentle on the skin.

EFFECT: Completes the grooming procedure by moisturising, helping to heal and reducing skin inflammation.

USE: On red, sensitive, irritated, itchy skin and dandruff.

FEATURED INGREDIENT: Rosehip Oil and Aloe Vera.

INSTRUCTIONS FOR USE: Apply liberally over damp coat. Wait 3 to 5 minutes and rinse. Not a leave in.

COMBINE WITH: Bye-Bye Shampoo and Relax Shampoo.

22.5 OZ. REF.: H711



A
COSMETICS

01.3 Spray Conditioners

Very effective conditioners
in a practical spray format



Matt-X

The dematting conditioning spray.

EFFECT: Conditions the coat and detangles mats, allowing them to be brushed out quickly without pulling the hair.

USE: On mats and tangles.

INSTRUCTIONS FOR USE: Spray over the mat on wet or dry hair. Leave for 1 minute then brush.

Winner of Best Product of the Year, Barkleigh Awards 2016.

10.1 OZ. REF.: H647



Flash

The conditioning spray for extraordinary shine

EFFECT: Conditioning, anti-static, adds shine without dampening the coat.

USE: On all cat and dog coat types.

INSTRUCTIONS FOR USE: Spray over wet or dry coat and brush. No need to rinse.

7.1 OZ. REF.: H634



Mix

The multiphase conditioning spray.

EFFECT: Helps with brushing, prevents knots, speeds up drying, maintains volume. Very pleasant, light fragrance.

USE: On all cat and dog coat types.

INSTRUCTIONS FOR USE: Spray over wet or dry coat and brush. No need to rinse.

8.4 OZ. REF.: H695 / 33.81 OZ. REF.: H697
Pump REF.: H848



Loop

Curl and cord texturising spray.

EFFECT: Instant curl and ringlet recovery, fixes and texturizes the cords.

USE: For dogs with curly and corded hair, generating curls and fixing them when drying.

FEATURED INGREDIENT: Lavender.

HOW TO USE: Spray on damp hair, massage and dry. As a finishing spray, apply after styling and combing. Or apply to wet cords, massage and dry.

8.4 OZ. REF.: H731 / 33.81 OZ. REF.: H732
Pump REF.: H848



Perfect duo Special for Dematting & Brushing

The perfect duo for breaking up mats.

EFFECT: The perfect combination for brushing the coat quickly, and gliding through mats.

USE: Coats with mats.

INSTRUCTIONS FOR USE: Spray over the coat - either dry or damp. Brush out with the double slicker.

REF.: F898



01.4

Hold and Volume

Very powerful styling hairsprays, giving volume without leaving residue in the coat



Big Bang

Extra Volume Spray

EFFECT: Achieve maximum volume applying just a small amount.
USE: On damaged coats, fine hair, areas in need of volume such as hocks or legs. On both dogs and cats.
INSTRUCTIONS FOR USE: Dry, spray 12" away from desired area and brush out with a comb or slicker.

5,07 OZ. REF.: H725



Podium Strong Hold

Hair spray for an extreme strong hold.

EFFECT: Complete hold capable of supporting almost any topknot.
USE: On topknots and after cutting + styling.
INSTRUCTIONS FOR USE: Topknots: spray from 12" and style. After cutting + styling: spray from 12" onto desired areas to prevent them from moving and losing their shape.

12.55 OZ. REF.: H663



Podium Dry Hold

Dry hair spray for extra hold and texturizing.

EFFECT: Instant dry hold that allows movement while adding texture to the coat.
USE: When cutting fine hair, after cutting + styling.
INSTRUCTIONS FOR USE: After cutting: spray and style.

12.55 OZ. REF.: H662



Zoom

Volumizing mousse.

EFFECT: Gives extra volume to the coat.
USE: On all coats to add extra volume, especially prior to cutting.
INSTRUCTIONS FOR USE: Apply the mousse liberally to wet or dry coat, focusing on the areas where you wish to add volume. Then blow dry with hot air and style with a brush or slicker.

5.08 OZ. REF.: H689



Static

Antistatic scissoring spray.

EFFECT: Removes static electricity while adding texture to the hair for a better finish.
USE: On static hair and/or during scissoring to control the position of the coat.
INSTRUCTIONS FOR USE: Spray on dry coat over the desired area and brush/comb.

4.6 OZ. REF.: H674



01.5 Perfumes

Long-lasting fragrances with personality



Perfume Display
18 units

COMPOSED OF:
REF.: H693_3 FRESH 3.04 OZ.
REF.: H652_3 CLASSIC 3.04 OZ.
REF.: H654_3 VIOLET 3.04 OZ.
REF.: H655_3 TIERRA 3.04 OZ.
REF.: H653_3 IMPACT 3.04 OZ.
REF.: H673_3 BABY 3.04 OZ.

SIZE / DIMENSIONS:
HEIGHT: 10.63"
WIDE: 9.84"
DEPTH: 14.17"

REF.: H743



Detox

A stylish fragrance with floral hints.

USE: Dogs and cats
HOW TO USE: Spray the perfume on the coat avoiding the face.

3.04 OZ. REF.: H765



Fresh

The fun, citric fragrance for pets.

USE: For cats and dogs.
INSTRUCTIONS FOR USE: Spray the perfume over the coat, avoiding the face.

3.04 OZ. REF.: H693



Classic

The fragrance for the oh so stylish.

USE: For cats and dogs.
INSTRUCTIONS FOR USE: Spray the perfume over the coat, avoiding the face.

3.04 OZ. REF.: H652



Impact

A fragrance for pets who want to make their mark.

USE: For cats and dogs.
INSTRUCTIONS FOR USE: Spray the perfume over the coat, avoiding the face.

3.04 OZ. REF.: H653



Violet

A fragrance for distinguished pets.

USE: For cats and dogs.
INSTRUCTIONS FOR USE: Spray the perfume over the coat, avoiding the face.

3.04 OZ. REF.: H654



Tierra

The fragrance for larger-than-life pets.

USE: For cats and dogs.
INSTRUCTIONS FOR USE: Spray the perfume over the coat, avoiding the face.

3.04 OZ. REF.: H655



Baby

A fragrance for puppies and the young at heart.

USE: For puppies, kittens and adult cats and dogs.
INSTRUCTIONS FOR USE: Spray the perfume over the coat avoiding the face.

3.04 OZ. REF.: H673





COSMETICS

01.6 Hygiene and Health

A complete line of products offering instant and efficient results



Sunscreen Spray

Sunscreen Hair Spray

EFFECT: Covers and protects the hair cuticle, preventing ultraviolet and infrared rays from damaging the hair.
USE: When outdoors in sunlight, on walks by the beach, lake, etc.
HOW TO USE: Spray on dry hair, if brushed or massaged into the coat the product is distributed more effectively but it is not essential.

8.4 fl.OZ. REF.: H762



Ear Cleaning Wipes

Moist finger wipes for ear hygiene.

EFFECT: Removes dirt and earwax, keeping bad odors at bay.
USE: For cats and dogs.
INSTRUCTIONS FOR USE: With clean hands, remove a wipe and place over your finger. Rub around the ear until clean. Discard wipe after use. Ideal for daily use.

50 Units REF.: H687



Aurigel

The ear cleansing gel

EFFECT: Removes earwax and controls bacterial growth in the ears.
USE: For dogs only.
FEATURED INGREDIENT: Tea Tree Oil.
INSTRUCTIONS FOR USE: Apply directly in the ear, massage and remove any excess gel with an ear cleansing finger pad or gauze.

3.53 OZ. REF.: H640



Auriclean

The antiseptic ear plucking powder.

EFFECT: Dries out the ear canal to facilitate plucking and removes bacteria and yeasts.
USE: For cats and dogs.
FEATURED INGREDIENT: Iodoform.
INSTRUCTIONS FOR USE: Apply directly to the ear, massage and pluck any hair growing inside.

1.06 OZ. REF.: H926



Clear

Easy ear hair removal

EFFECT: Dries out the ear canal to facilitate plucking.
USE: Dogs and cats.
INSTRUCTIONS FOR USE: Apply powder into ear canal. Massage gently to distribute the product and remove hair using fingers or forceps.

1.06 OZ. REF.: H248



Pretty Eyes

The tear stain remover.

EFFECT: With regular use, kills off bacteria responsible for tear stains and restores original color.
USE: For cats and dogs.
FEATURED INGREDIENT: Rosemary and Thyme.
INSTRUCTIONS FOR USE: Apply the liquid with an eye cleansing cloth or gauze and rub the stained area. Daily use.

8.4 OZ. REF.: H646



Eye Cleaning Wipes

Moist finger wipes for eye hygiene.

EFFECT: Removes dirt and tear stains as well as wiping away secretions.
USE: For cats and dogs with tear stains, excess tearing and secretions.
FEATURED INGREDIENT: Sodium Chloride.
INSTRUCTIONS FOR USE: With clean hands, remove a wipe and place over your finger. Rub around the eye until clean. Discard wipe after use. Ideal for daily use.

50 Units REF.: H686





Dentix

The toothpaste gel for dogs.

EFFECT: Keeps bad breath at bay and prevents plaque and bacterial growth. **USE:** For dogs. **FEATURED INGREDIENT:** Tea Tree Oil. **INSTRUCTIONS FOR USE:** Apply with a silicone tooth brush and rub over teeth and gums. Use daily.

3.85 OZ. REF.: H696



Tooth Cleaning Wipes

Moist finger wipes for dental hygiene.

EFFECT: Removes dirt and keeps plaque and bad breath at bay. **USE:** For cats and dogs. **FEATURED INGREDIENT:** Mint. **INSTRUCTIONS FOR USE:** With clean hands, remove a wipe and place over your finger. Rub over teeth and gums. Discard wipe after use. Ideal for daily use.

50 Units REF.: H685



Dental Pack Smile

Complete set for dental hygiene

EFFECT: Eliminates tartar plaque and corrects bad breath. **USE:** For the upkeep of hygiene and cleanliness of a dog's teeth and gums. **INSTRUCTIONS FOR USE:** With a silicone thimble or brush apply the paste by rubbing all over the teeth and gums (edible paste).

3.17 OZ. REF.: H691



Sniff

Body Deodorant Spray

EFFECT: Eliminates body odor providing a pleasant and long lasting fragrance. **USE:** On dogs and cats when they give off an unpleasant odor. **INSTRUCTIONS FOR USE:** Spray from a distance of 30 cm over the entire coat, avoiding the face. In case of overuse brush out to dry the coat.

5.07 OZ. REF.: H726



Speed

Dry shampoo spray.

EFFECT: The talc component removes dirt and unpleasant odors. **USE:** For quickly freshening up cats and dogs when bathing is not possible. *Also great for adding extra volume on difficult coats.* **INSTRUCTIONS FOR USE:** Spray liberally over the coat then brush to remove any talc and dirt.

5.9 OZ. REF.: H633



X-Mint

The breath freshener for pets.

EFFECT: Instantly eliminates bad breath and prevents plaque. **USE:** Cats and dogs. **FEATURED INGREDIENT:** Mint. **INSTRUCTIONS FOR USE:** Spray 3 times directly into the pet's mouth.

0.49 OZ. REF.: H721



Ear Stick

Ear correcting glue.

EFFECT: Quick-drying, long-lasting adhesive. **USE:** Trains puppy ears to grow in the correct position. **INSTRUCTIONS FOR USE:** Do NOT cut the coat in the application area. Apply a drop of adhesive with a cotton ball to one of the two points to be joined. Wait 10 seconds, stick the two points together and hold for 40 seconds. To remove, shave the hair growing between the adhesive and skin. It is recommended to perform an allergy test 24 hours prior to use.

1.01 OZ. REF.: H262



Xtop

The styptic powder.

EFFECT: Clots and stops bleeding in small cuts that can occur when trimming the nails. **USE:** For cats and dogs. **INSTRUCTIONS FOR USE:** Hold the pad of the injured nail, clean the blood and apply a pinch of powder, apply pressure for a few seconds.

0.52 OZ. REF.: H259



Dfender

Repairing cream for damaged skin

EFFECT: Repairs, regenerates, relieves itching, heals and moisturizes. **USE:** For dogs and cats with dry noses, cracked pads, elbow calluses, lack of hair, bites, eczema, scars, etc. **INSTRUCTIONS FOR USE:** Apply on the affected area once or twice a day until recovery.

3.38 OZ. REF.: H728



Balsam

The skin soothing solution.

EFFECT: Calms and soothes red, itchy, inflamed skin. **USE:** For cats and dogs with affected skin. Ideal for after stripping. **FEATURED INGREDIENT:** Aloe Vera, Rosehip and Chamomile. **INSTRUCTIONS FOR USE:** Spray over coat and skin of affected area and massage until it penetrates the skin. Can be used on wet or dry coats.

8.4 OZ. REF.: H699

01.7 Coloring and Chalks

Products designed
to make the most of
the color and style
of your pet



Colorex

Colour Powder Pigment.

USE: Covers areas of skin or hair that need more color and light.
INSTRUCTIONS FOR USE: Apply a small amount with a bristle brush until the desired effect is achieved. Remove in the bath or with a wet wipe.

POT: 2.65 OZ REF.: H313 COLOR: LIGHT BROWN
REF.: H311 COLOR: GREY REF.: H314 COLOR: BROWN
REF.: H312 COLOR: BLACK REF.: H315 COLOR: DARK BROWN



Intensifying Color Solution

The professional extreme color treatment.

EFFECT: Visibly enhances white coats and removes yellow tones, intensifies black coats and evens out grey tones.
USE: On black, white and grey dogs to improve color.
FEATURED INGREDIENT: Extra blue pigment.
INSTRUCTIONS FOR USE: Apply in small amounts after working into a light lather in sections. Rinse after 3-5 minutes.
COMBINE WITH: Spa Vital Conditioning Mask, Keratin Vital Conditioner and Protein Vital Conditioner.

33.9 OZ. REF.: H629



Powdex

The stripping powder.

EFFECT: Dries hair grease and provides an anti-slip effect to facilitate stripping. Also lightens dull or stained white fur.
USE: For stripping: on dogs with fine, greasy, very smooth or very dense coats. **For lightening:** on show dogs to enhance their natural white color or to mask staining.
INSTRUCTIONS FOR USE: For stripping: dip fingers in powder. Re-apply as needed. For whitening: apply the powder with a bristle brush.

17.64 OZ. REF.: H928



Continuous Spray Bottle

For a long lasting spray.

USE: With water or diluted conditioner.
INSTRUCTIONS FOR USE: Fill with your chosen product. The bottle can be held in any position. Important: Do not use if the product is not completely diluted, or with undiluted shampoo.

REF.: K309



Micro-Particle Spray Bottle

For the finest spray.

USE: With water or diluted conditioner.
INSTRUCTIONS FOR USE: Fill with your chosen product. Always hold the bottle upright when spraying. Important: Do not use if product is not completely diluted, or with undiluted shampoo.

REF.: Y999



Shampoo Pump Dispenser

The easiest way to work with shampoo.

USE: Adapts to all Artero 180 OZ. bottles.
INSTRUCTIONS FOR USE: Screw on in place of cap and press to dispense shampoo.

REF.: H847



COSMETICS

01.8 4Cats

Complete line for the
maintenance
and hygiene of cats



4Cats

The perfect cat shampoo

EFFECT: Removes dandruff and excess oil. Does not contain any perfume.
USE: All cat breeds.
FEATURED INGREDIENT: Chamomile.
INSTRUCTIONS FOR USE: Massage well into wet coat to achieve a lather. Wait 3 to 5 minutes and rinse.
COMBINE WITH: Detox Vital Conditioning Mask, Spa Vital Mask and Protein Vital Conditioner.

9 OZ. REF.: H657
33.90 OZ. REF.: H658



Long Hair

Shampoo for long-haired cats

EFFECT: Helps to reduce shedding and moisturizes helping avoid knots.
USE: In long-haired or shedding cats.
FEATURED INGREDIENT: Biotin
HOW TO USE: Massage the shampoo into the damp coat, until it forms a lather and rinse instantly.
USE WITH: 4CATS Vital Mask.

REF.: H763 9 OZ.



4Cats Vital

Cat specific conditioner

EFFECT: Helps to reduce shedding and moisturizes helping to prevent knots.
USE: In long-haired or shedding cats.
FEATURED INGREDIENT: Biotin.
HOW TO USE: Massage the shampoo into the damp coat until it forms a lather and rinse instantly.
USE WITH: 4CATS Vital.

REF.: H760 3.53 OZ.



Finger Wipes for Ears 4Cats

Wet finger wipes for the care of the ears of your cat

EFFECT: Removes dirt and wax build up from the ear. Helps to control any unpleasant odors.
USE: Cats
FEATURED INGREDIENT: Chamomile and Aloe Vera
HOW TO USE: Placing a wipe on your finger, gently clean inside the ear, removing any dirt and wax. Dispose of wipe after use. Ideal for daily use.

REF.: H757 50 units.



Finger Wipes for Eyes/Nose 4cats

Wet finger wipes for the care of the eyes and nose of your cat

EFFECT: Removes dirt, stains and secretions.
USE: Cats with stains around the tear ducts.
FEATURED INGREDIENT: Sodium Chloride y aloe vera.
HOW TO USE: Placing a wipe on your finger, gently clean around the affected eye and nose area. Dispose of wipe after use. Ideal for daily use.

REF.: H756 50 units.



Plis Plas Cleaning Gloves 4Cats

Wet-Wipe Gloves for instant cleaning!

EFFECT: Cleans and freshens in just one wipe! Perfumes and gives shine to the coat.
USE: For cleaning cats quickly.
FEATURED INGREDIENT: Aloe Vera.
HOW TO USE: Place glove on your hand and gently wipe all over the coat. If needed, use more than one glove. Dispose of wipe after use.

REF.: H758 20 units.



Shampoos

Technical Information

Combine with the correct conditioner



	BASIC	VITALIZANTE	HIDRATANTE	BLANC	BABY	BYE BYE
Cleansing Action	● ●	● ● ●	● ●	● ● ●	● ●	● ●
Hydration	●	● ●	● ● ●	●	● ●	●
Deodorizing	● ●	● ● ●	● ● ●	● ●	● ● ●	● ●
Skin care	● ●	● ●	● ●	●	● ● ●	● ● ●
Results	All purpose cleanser	Adds shine, texture and volume	Adds hydration and shine	Color enhancer, eliminates yellow tones	Very mild and gentle cleanser	Prevents ticks + fleas + repels mosquitos. Antiseptic, antiparasitic, antifungal, antibacterial
Use	• First bath on all coat types	• Curly coats • Wire coats • Smooth coat	• Drop coats, dry or damaged coats	• White coats • Black coats • Grey tones	• Puppies (all breeds)	• Irritated skin • Fleas or ticks • Repelling mosquitos • Black skin
Combine with these conditioners		• Protein Vital • Detox Vital	• Keratin Vital • Protein Vital	• Keratin Vital • Detox Vital	• Spa Vital • Protein Vital	• Spa Vital
Wait time before rinsing	0 min.	3-5 mins	3-5 mins	3-5 mins	3-5 mins	3-5 min.

	RELAX	DETOX	4CATS	TSUNAMI	4CATS LONG HAIR
Cleansing Action	● ● ●	● ● ●	● ● ●	● ● ●	● ● ●
Hydration	●	● ●	●	●	● ● ●
Deodorizing	● ● ●	● ● ●	● ● ●	● ● ●	● ●
Skin care	● ● ●	● ● ●	● ●	●	● ●
Results	Calming and relaxing effect on sensitive skin	Deep cleanse. Anti-toxin and anti-pollution effect	Cleanses and degreases feline coats. Gives volume and shine	Extreme cleansing and degreasing effect, deoderant	Cleanser and moisturizer that helps remove shedding coat
Use	• Sensitive skins • Irritations • Dandruff • Loss of hair	• City pets • Very dirty coats • Smelly coats	• All coat types	• First application on dirty coats	• Long-haired cats • Shedding coats
Combine with these conditioners	• Spa Vital	• Detox Vital	• Protein Vital • Detox Vital		• 4Cats Vital Mask
Wait time before rinsing	3-5 mins	3-5 mins	3-5 min.	0 min.	3-5 min.

Conditioners

Technical Information

Combine with the correct shampoo



	PROTEIN VITAL	KERATIN VITAL	DETOX VITAL	SPA VITAL	KUBIC
Softens coat	● ●	● ●	● ●	●	● ●
Hydrates coat	● ●	● ●	● ● ●	● ●	● ●
Hydrates skin	● ●	● ●	● ●	● ● ●	● ●
Regenerates skin	●	● ● ●	● ●	● ●	●
Results	Repairs damaged coat.	Recovery and sealing of the damaged cuticle and reinforcement of the hair to avoid breakage. Gives weight to the hair.	Deep hydration with long-lasting effect. Detoxification during conditioning.	Balsamic effect for the most sensitive, allergic or irritated skin.	Volume, moisturizer and eases the combing process making cutting much easier.
Use	• To prevent matts • Detangler • Maintenance • Improves coat quality • Helps against shedding • Use on coats requiring volume	• On damaged coats • Dried and frazzled coats • Long coats	• Dry coats • Grungy coats • Rough coat • Tangled coat	• Allergies • Irritations • Hair loss • Dandruff • Dry skin • Hairless dog	• Prior to cutting • Coats needing volume • Show dogs • Competition dogs
Combine with these shampoos	• Vitalizante • Baby • 4 cats • Hidratante	• Hidratante • Blanc	• Vitalizante • Detox • Blanc • 4 cats	• Relax • Bye Bye • Baby	• Vitalizante • Blanc
Rinse after 5 minutes	●	●	●	●	
No need to Rinse	●	●			●

Cosmetics

for Coat Types



COAT TYPE	COAT CONDITION / COLOUR	1 st SHAMPOO	2 nd SHAMPOO	CONDITIONER	SPRAY CONDITIONER
SHORT HAIR	ADEQUATE	Basic	Vitalizante	Protein	Flash
	DIRTY / SHEDDING	Tsunami	Detox	Detox	Flash
	SHOW	Detox	Vitalizante	Kubic	Flash
LONG HAIR	ADEQUATE	Basic	Hidratante	Keratin	Mix
	DIRTY	Tsunami	Hidratante	Keratin	Mix
	WHITE	Tsunami	Blanc	Keratin	Mix
	TANGLED	Detox	Hidratante	Protein	Matt-X
CURLY COAT	SHOW	Detox	Hidratante	Keratin	Flash
	ADEQUATE	Basic	Vitalizante	Kubic	Mix
	DIRTY	Tsunami	Detox	Kubic	Mix
	TANGLED	Detox	Detox	Kubic	Matt-X
CORDED COAT	WHITE	Tsunami	Blanc	Detox	Flash
	SHOW	Detox	Hidratante	Keratin	Flash
	ADEQUATE	Tsunami	Vitalizante	Spa	Loop
	DIRTY	Tsunami	Detox	Spa	Loop
MEDIUM LONG HAIR	WHITE	Tsunami	Blanc	Detox	Flash
	SHOW	Detox	Hidratante	Keratin	Flash
	ADEQUATE	Basic	Vitalizante	Kubic	Mix
	DIRTY	Tsunami	Vitalizante	Kubic	Mix
WIRED COAT	TANGLED	Tsunami	Hidratante	Kubic	Matt-X
	WHITE	Tsunami	Blanc	Detox	Mix
	ADEQUATE	Basic	Vitalizante	Protein	Mix
	DIRTY	Tsunami	Detox	Detox	Mix
DOUBLE COAT	SHEDDING	Detox	Hidratante	Protein	Mix
	WHITE	Tsunami	Blanc	Detox	Flash
	SHOW	Tsunami	Vitalizante	Kubic	Flash
	ADEQUATE	Basic	Relax	Spa	Flash
HAIRLESS	DIRTY	Relax	Relax	Spa	Flash

SENSITIVE SKINS			
PROBLEM	1 st SHAMPOO	2 nd SHAMPOO	CONDITIONER
SEBORRHEA	Relax	Relax	Spa Vital
BURNING			
IRRITATION			
DANDRUFF			

SENSITIVE SKINS			
PROBLEM	1 st SHAMPOO	2 nd SHAMPOO	CONDITIONER
FUNGUS	Bye Bye	Bye Bye	Spa Vital
MALASSEZIA			
FLEAS			
DARK SKIN			
WOUNDS			
SCRATCHES			
STRIPPING			

SPECIAL COMBO	1 st SHAMPOO	2 nd SHAMPOO	1 st CONDITIONER	2 nd CONDITIONER	EXTRA
TANGLES	Detox	Hidratante	Protein Vital	Matt-X	
SHEDDING	Detox	Hidratante	Protein Vital	Mix	
DEGREASING	Tsunami	Detox	Detox Vital		
NUCLEAR WHITE	Detox	Intensifying	Detox Vital		
BLACK +1 TONE	Intensifying	Intensifying	Protein Vital		
STRAIGHTENING	Detox	Hidratante	Protein Vital	Keratin Vital	Flash
VOLUME	Tsunami	Vitalizante	Kubic Vital		
EXTRA VOLUME	Tsunami	Vitalizante			Zoom
EXTRA WIRED	Vitalizante	Vitalizante			
PUPPY	Baby	Baby	Spa		Flash

Dogs and cats have many different coat types and colours.

This chart will help us to use the best combination of cosmetics during bathing and brushing, according to the type of coat, colour and the condition in which the pet arrives at the grooming salon.

The shampoo should always be applied twice for a thorough clean and to get best results from the properties of each product.

Conditioner should be applied after shampooing.

Please note there are also instances when we can combine different products for the best results.

Tools

NATURE COLLECTION

02



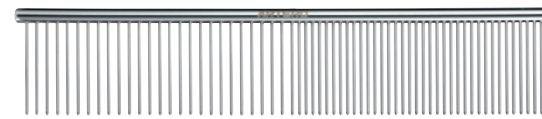
The new professional Nature Collection by Artero is an eco-friendly essential for your salon.



TOOLS
NATURE COLLECTION

O2.1 Combs

Chrome, Aluminum
and Carbon – with all
types of teeth for the
perfect finish



Ginger Long Tooth Comb

FEATURES: Regular teeth. Chrome.
USE: For combing and tidying the coat and untangling knots.
COAT TYPE: All types.
FOR: Medium dogs and cats.

REF.: P949 SIZE: 7" x 1.2"



Bear Extra Volume Comb

FEATURES: Conical teeth. Chrome.
USE: For lifting, teasing, straightening and tidying the coat during cutting.
COAT TYPE: Medium and long, fine or medium density.
FOR: Cats and dogs.

REF.: P270 SIZE: 9" x 1.3"

NEW



Bear Double Teeth Volume Comb

FEATURES: Tapered teeth, chrome-plated.
USE: For combing and detangling during cutting, reaches deep into the coat.
COAT TYPE: All types.
FOR: Dogs and cats.

REF.: P779 SIZE: 9" x 1.3"



Rocky Giant Blue Comb

FEATURES: Regular teeth. Chrome.
USE: For combing the coat and untangling knots.
COAT TYPE: Medium and long, dense.
FOR: Medium, large dogs and cats.

REF.: P272 SIZE: 9.75" x 1.4"



Ginger Short Tooth Comb

FEATURES: Regular teeth. Chrome.
USE: For combing and tidying the coat and untangling knots.
COAT TYPE: Short, medium and long.
FOR: Small and medium dogs and cats.

REF.: P950 SIZE: 7" x 1.1"



Bear Regular Volume

FEATURES: Conical teeth. Chrome.
USE: For lifting, teasing, straightening and tidying the coat during cutting.
COAT TYPE: Medium and long, fine or medium density.
FOR: Cats and dogs.

REF.: P983 SIZE: 9" x 1.3"

NEW



Bear Poodle Volume Comb

FEATURES: Tapered teeth, chrome-plated.
USE: Lifts, detangles and cleans the coats of poodles and curly-haired breeds.
COAT TYPE: Curly coats.
FOR: Dogs.

REF.: P780 SIZE: 9" x 1.3"



Rocky Giant Gold Comb

FEATURES: Conical teeth. Chrome.
USE: For lifting, teasing, straightening and tidying the coat during cutting.
COAT TYPE: Medium and long, dense or curly.
FOR: Medium and large dogs and cats.

REF.: P273 SIZE: 9.75" x 1.4"



Ginger Mini Comb

FEATURES: Regular teeth. Chrome.
USE: For combing and tidying the coat and untangling knots.
COAT TYPE: All types.
FOR: Small dogs and cats.

REF.: P951 SIZE: 5.9" x 0.9"



Bear Cornerless Comb

FEATURES: Round teeth. Green Chrome.
USE: For lifting and fluffing up the coat. Ideal for faces.
TYPE OF COAT: Medium and long; Medium or fine.
FOR: Dogs and cats.

REF.: P984 SIZE: 9" x 1.3"



Bravo Double Width Comb

FEATURES: Conical teeth. Aluminium.
USE: For lifting, teasing, straightening and tidying the coat during cutting.
COAT TYPE: Short, medium and long, medium density or fine coat.
FOR: Cats and dogs.

REF.: P271 SIZE: 7.5" x 1.2"



Tango
Extra Fine Pin Comb



FEATURES: Extra fine static tooth, chrome plated, with bamboo handle.
USE: For opening, tidying the coat, untangling and removing dead coat.
COAT TYPE: Short, medium and long hair.
FOR: Small, medium size dogs and cats.

REF.: P943 SIZE: 8.6" x 1.7"



Tango
Wide Comb



FEATURES: Long, fixed, chrome-plated pins with bamboo handle.
USE: For opening, tidying coat, untangling and removing dead coat.
COAT TYPE: Short, medium and long.
FOR: Large, medium size dogs and cats.

REF.: P941 SIZE: 8.6" x 2.1"



Tango
Double Swivel Pin Comb



FEATURES: Short and long rotating pins, chrome plated, Bamboo handle.
USE: To open, tidy the coat and untangle with ease.
COAT TYPE: Short, medium and long hair.
FOR: Small, medium size dogs and cats.

REF.: P942 SIZE: 8.6" x 2.1"



Chippy
Oval



FEATURES: Fine, fixed, chrome-plated pins with bamboo handle.
USE: For opening, tidying the coat, untangling and backcombing.
COAT TYPE: Short, medium and long.
FOR: Small, medium size dogs and cats.

REF.: P944 SIZE: 3.9" x 2.3"



Buddy
Mini Lagrimales



FEATURES: Regular Chrome pin 0.8"
USE: For removing secretions from eye area, and breaking knots from in-between paw pads.
TYPE OF COAT: All types
FOR: Dogs and cats.

REF.: P963 SIZE: 5.1" x 1.1"



TOOLS
NATURE COLLECTION

02.2 Slickers and Brushes

An extensive range of slicker brushes with different types of teeth, head-sizes and handles, guaranteeing unique results in brushing and de-matting



P814

P815

Nala
Articulated Slicker



FEATURES: 0.8" pins on flexible head.
USE: One side of the slicker has protected pins to avoid irritations, and the other side has normal pins for brushing out.
TYPE OF COAT: All types of coats and tangles.
FOR: Medium and small breed dogs.

REF.: P814 SIZE: 7,8" X 1,7"

Nala
Double Articulated Slicker



FEATURES: 0.8" pins on flexible head.
USE: One side of the slicker has protected pins to avoid irritations, and the other side has normal pins for brushing out.
TYPE OF COAT: All types of coats and tangles
FOR: Medium and large breed dogs.

REF.: P815 SIZE: 7,8" X 3,5"



Romeo
Slicker L

FEATURES: 0.43" fine pins on rubber base with air cushion system and bamboo body.
USE: To open and separate the coat, untangle mats.
COAT TYPE: Medium and long coats.
FOR: Medium and large sized dogs and cats.

REF.: P933 SIZE: 4.7" x 3.1"



Romeo
Slicker M

FEATURES: 0.43" fine pins on rubber base with air cushion system and bamboo body.
USE: To open and separate the coat, untangle mats.
COAT TYPE: Short, medium and long.
FOR: Medium, large sized dogs and cats.

REF.: P934 SIZE: 4.3" x 2.3"



Romeo
Slicker S

FEATURES: 0.43" fine pins on rubber base with air cushion system and bamboo body.
USE: To open and separate the coat, untangle mats.
COAT TYPE: Short, medium and long.
FOR: Small, medium sized dogs and cats.

REF.: P935 SIZE: 3.5" x 1.9"



Romeo
Slicker XS

FEATURES: 0.43" fine pins on rubber base with air cushion system and bamboo body.
USE: To open and separate the coat, untangle mats.
COAT TYPE: Short, medium and long.
FOR: Puppies and small dogs and cats.

REF.: P936 SIZE: 2.5" x 1.9"



Juliet
Long Pins L

FEATURES: 0.79" fine pins on air cushion system and bamboo body.
USE: To open and separate the coat, untangle mats.
COAT TYPE: Medium and long.
FOR: Medium and large sized dogs and cats.

REF.: P771 SIZE: 4.7" x 3.1"



Juliet
Long Pins M

FEATURES: 0.79" fine pins on air cushion system and bamboo body.
USE: To open and separate the coat, untangle mats.
COAT TYPE: Medium and long.
FOR: Medium and large sized dogs and cats.

REF.: P770 SIZE: 4.3" x 2.3"



Juliet
Long Pins S

FEATURES: 0.79" fine pins on air cushion system and bamboo body.
USE: To open and separate the coat, untangle mats.
COAT TYPE: medium and long.
FOR: Small and medium sized dogs and cats.

REF.: P769 SIZE: 3.5" x 1.9"



Juliet
Long Pins XS

FEATURES: 0.79" fine pins on air cushion system and bamboo body.
USE: To open and separate the coat, untangle mats.
COAT TYPE: Short, medium and long.
FOR: Puppies and small sized dogs and cats.

REF.: P768 SIZE: 2.5" x 1.9"



Romeo
Protected Pin L

FEATURES: 0.43" fine pins with plastic tip on air cushion system and bamboo body.
USE: To open and separate the coat, untangle mats.
COAT TYPE: Medium and long.
FOR: Medium and large sized dogs and cats.

REF.: P937 SIZE: 4.7" x 3.1"



Romeo
Protected Pin M

FEATURES: 0.43" fine pins with plastic tip on air cushion system and bamboo body.
USE: To open and separate the coat, untangle mats.
COAT TYPE: Short, medium and long.
FOR: Medium, large dogs and cats.

REF.: P938 SIZE: 4.3" x 2.3"



Romeo
Protected Pin S

FEATURES: 0.43" fine pins with plastic tip on air cushion system and bamboo body.
USE: To open and separate the coat, untangle mats.
COAT TYPE: Short, medium and long.
FOR: Small, medium sized dogs and cats.

REF.: P939 SIZE: 3.5" x 1.9"



Romeo
Protected Pin XS

FEATURES: 0.43" fine pins with plastic tip on air cushion system and bamboo body.
USE: To open and separate the coat, untangle mats.
COAT TYPE: Short, medium and long.
FOR: Puppies and small sized dogs and cats.

REF.: P940 SIZE: 2.5" x 1.9"



Juliet
Long Protected Pin L

FEATURES: 0.79" thin pins with plastic tip on air cushion system and bamboo body.
USE: To open and separate the coat, untangle mats.
COAT TYPE: Medium and long.
FOR: Medium, large size dogs and cats.

REF.: P775 SIZE: 4.7" x 3.1"



Juliet
Long Protected Pin M

FEATURES: 0.79" thin pins with plastic tip on air cushion system and bamboo body.
USE: To open and separate the coat, untangle mats.
COAT TYPE: medium and long.
FOR: Medium, large size dogs and cats.

REF.: P774 SIZE: 4.3" x 2.3"



Juliet
Long Protected Pin S

FEATURES: 0.79" thin pins with plastic tip on air cushion system and bamboo body.
USE: To open and separate the coat, untangle mats.
COAT TYPE: medium and long.
FOR: Small and medium sized dogs and cats.

REF.: P773 SIZE: 3.5" x 1.9"



Juliet
Long Protected Pin XS

FEATURES: 0.79" thin pins with plastic tip on air cushion system and bamboo body.
USE: To open and separate the coat, untangle mats.
COAT TYPE: medium and long.
FOR: Puppies and small dogs and cats.

REF.: P772 SIZE: 2.5" x 1.9"



Stella
Super Soft Slicker L

FEATURES: Pin 0.6" Extra Flexible.
USE: To brush out and give volume to the coat.
TYPE OF COAT: All types of coats. Short and medium lengths.
FOR: Large dogs.

REF.: P969
SIZE: 4.7" x 3.3"



Stella
Super Soft Slicker M

FEATURES: Pin: 0.6" Extra Flexible.
USE: To brush out and give volume to the coat.
TYPE OF COAT: All types of coats. Short and medium lengths.
FOR: Medium dogs and large cats.

REF.: P968
SIZE: 4.3" x 2.3"



Stella
Super Soft Slicker S

FEATURES: Pin 0.6" Extra Flexible.
USE: To brush out and give volume to the coat.
TYPE OF COAT: All types of coats. Short and medium lengths.
FOR: Small dogs and cats.

REF.: P967
SIZE: 3.5" x 1.9"



Stella
Super Soft Slicker XS

FEATURES: Pin 0.6" extra flexible.
USE: To brush out and give volume to the coat.
TYPE OF COAT: all types of coats. Short and medium lengths.
FOR: Small dogs, puppies and cats.

REF.: P966
SIZE: 2.5" x 1.9"



Pipo
Classic Slicker M

FEATURES: 0.5" fine pins on a rigid base. Bamboo handle.
USE: To open and separate the coat and untangle mats.
TYPE OF COAT: All types.
FOR: Puppies, toy dogs and small cats.

REF.: P808
SIZE: 4,5" X 6,1"



Pipo
Classic Slicker S

FEATURES: 0.5" fine pins on a rigid base. Bamboo handle.
USE: To open and separate the coat and untangle mats.
TYPE OF COAT: All types.
FOR: Medium and large breed puppies, small dogs and cats.

REF.: P807
SIZE: 3,3" X 5,3"



Pipo
Classic Slicker XS

FEATURES: 0.5" fine pins on a rigid base. Bamboo handle.
USE: To open and separate the coat and untangle mats.
TYPE OF COAT: All types.
FOR: Puppies, toy dogs and small cats.

REF.: P806
SIZE: 2,3" X 5,1"



Bella
Double Flexible Slicker S

FEATURES: 0.7" flexible pin.
USE: Gray side for opening and straightening the coat. Black side to remove tangles and knots.
COAT TYPE: All coat types and tangles.
FOR: Medium and large breed dogs and cats.

REF.: P953
SIZE: 8.3" x 2.4"



Bella
Double Flexible Slicker M

FEATURES: 0.7" flexible pin.
USE: Gray side for opening and straightening the coat. Black side to remove tangles and knots.
COAT TYPE: All coat types and tangles.
FOR: Medium and large breed dogs and cats.

REF.: P952
SIZE: 8.3" x 3.1"



Bella
Double Flexible Slicker L

FEATURES: 0.7" flexible pin.
USE: Gray side for opening and straightening the coat. Black side to remove tangles.
COAT TYPE: All types of coat and tangles.
FOR: Medium and large breed dogs.

REF.: P809
SIZE: 4,1" X 8,6"



Rufus
Universal Slicker L

FEATURES: Semi-rigid 0.7" pins.
USE: To open and separate coat, untangle mats.
TYPE OF COAT: Thick, slightly matted coats.
FOR: Medium and large breed dogs.

REF.: P813
SIZE: 4,1" X 6,6"



Rufus
Universal Slicker M

FEATURES: Semi-rigid 0.7" pins.
USE: To brush, open and stretch the fur, removing tangle.
TYPE OF COAT: Dense, slightly matted hair.
FOR: Small and medium breed dogs.

REF.: P812
SIZE: 4,1" X 6,6"



Rufus
Universal Slicker S

FEATURES: Semi-rigid 0.7" pins.
USE: To brush, open and stretch the fur, removing tangle.
TYPE OF COAT: Dense, slightly matted hair.
FOR: Small breed dogs and cats.

REF.: P811
SIZE: 3,1" X 6,2"



Beast
Matt-Breaking Slicker L

FEATURES: Rigid Pin 0.9"
USE: For elimination of matts and knotting.
TYPE OF COAT: Tangles and knots in medium, long and shedding coats.
FOR: Medium and large breeds.

REF.: P954 SIZE: 4.7" x 7.5"



Beast
Matt-Breaking Slicker M

FEATURES: Rigid Pin 0.9"
USE: For thorough removal of tangles and knots.
TYPE OF COAT: Short, medium or long.
FOR: Small and medium dogs.

REF.: P955 SIZE: 4.7" x 6.7"



Beast
Matt-Breaking Slicker L

FEATURES: Rigid Pin 0.9"
USE: Both sides have the same type of pins for difficult tasks.
TYPE OF COAT: Very dense poodle-type hair, and tangles.
FOR: Medium and large breed dogs.

REF.: P810 SIZE: 4,1" X 8,6"



Nova
Butter Soft Metal Pin Brush L

FEATURES: Metal Pin 0.98".
USE: For brushing the coat without splitting the hair.
TYPE OF COAT: Wired, médium and long.
FOR: All sizes of dogs.

REF.: P956 SIZE: 9.5" x 2.36"



Nova
Metal Pin Brush

FEATURES: 0.94" metal pins and bamboo body.
USE: To separate the coat and remove tangles.
COAT TYPE: Medium and long.
FOR: Dogs and cats.

REF.: P931 SIZE: 8.6" x 2.3"



Nova
Mini Brush

FEATURES: 0.94" metal pins and bamboo body.
USE: To open out the coat and remove tangles.
COAT TYPE: Medium and long.
FOR: Puppies, small sized dogs and cats.

REF.: P932 SIZE: 7.4" x 1.9"



Nova
Double Slicker Brush

FEATURES: 0.78" flexible pin.
USE: For brushing and separating the coat – great for straightening hair
TYPE OF COAT: All types and lengths of coats.
FOR: Dogs and cats.

REF.: P957 SIZE: 9.8" x 2.6"



Nova
Wild Boar Bristle Brush

FEATURES: Boar bristle and bamboo body.
USE: For brushing fine hair and sensitive areas, gives shine, removing volume from the coat.
COAT TYPE: Short, medium and long.
FOR: Dogs and cats with short hair.

REF.: P929 SIZE: 8.6" x 2.3"



Nova
Copper Bristle Brush

FEATURES: Copper and boar bristle with bamboo body.
USE: To remove volume from the coat, to give shine and to fix it to the body.
COAT TYPE: Wire coats, short and medium.
FOR: Dogs.

REF.: P930 SIZE: 8.6" x 2.3"



TOOLS
NATURE COLLECTION

02.3 Undercoat, mats and shedding

Top quality tools for
the toughest of jobs



NEW



Yako
Extreme coat DOUBLE

FEATURES: 20 Teeth.
USE: For removing trapped undercoat, as well as brushing out mats with ease thanks to the T-shaped teeth.
TYPE OF COAT: shedding (short, double coat, etc.)
FOR: Dogs and cats

REF.: P816 SIZE: 4.3" x 6.3"



Golf
Deshedder 45°

FEATURES: Stainless steel blade with 45° inclination, narrow teeth and bamboo body.
USE: Removes deep undercoat aiding the stripping process and helps eliminate shedding hair.
COAT TYPE: Short, double coated, spaniels and wire coats.
FOR: Dogs and cats.

REF.: P776 SIZE: 6.4" x 3.1"



Golf
Deshedder 90°

FEATURES: Stainless steel blade with 90° inclination, narrow teeth and bamboo body.
USE: Removes undercoat in wire coats, aiding the stripping process and eliminates shedding hair.
COAT TYPE: Short, double coated, spaniels and wire coats.
FOR: Dogs and cats.

REF.: P777 SIZE: 6.4" x 3.1"



Golf
Deshedder 120°

FEATURES: Stainless steel blade with 120° inclination, narrow teeth and bamboo body.
USE: Removes shedding and dead undercoat, helps the stripping process.
COAT TYPE: Short, double coated, spaniels and wire coats.
FOR: Dogs and cats.

REF.: P778 SIZE: 6.4" x 3.1"



King
Super Coat Doble L

FEATURES: Curve edged, double-sided blades and bamboo body.
USE: Multi-purpose, to remove mats, knots and shedding. Removes undercoat in depth and helps stripping.
COAT TYPE: Wire coats, spaniels, double coated and short.
FOR: Dogs and cats

REF.: P945 SIZE: 7.8" x 3.1"



King
Super Coat Doble M

FEATURES: Curve edged, double-sided blades and bamboo body.
USE: Multi-purpose, to remove mats, knots and shedding hair. Removes undercoat in depth and helps stripping.
COAT TYPE: Wired-coats, spaniels, double coated and short.
FOR: Dogs and cats

REF.: P946 SIZE: 7.8" x 2.3"



Gus
Ultra Coat

FEATURES: 12 curved, wavy blades .
USE: Multipurpose. For removing knots, mats and dead coat. For removing undercoat and helping with the stripping process.
TYPE OF COAT: Wired, spaniels, double and short coats.
ANIMAL: Dogs

REF.: P965 SIZE: 2.6" x 6.7"



Rex
Rake L

FEATURES: 20 Teeth.
USE: For removing trapped undercoat, as well as brushing out mats with ease thanks to the T-shaped teeth.
TYPE OF COAT: shedding (short, double coat, etc.)
FOR: Dogs and cats.

REF.: P973 SIZE: 4.3" x 6.3"



Echo
Rake with Rotating Pins

FEATURES: Pins 1.0"
USE: For removing dead undercoat as well as mats and knots thanks to the T-form and rotating pins.
TYPE OF COAT: shedding (short, double coat, Nordics, etc.)
ANIMAL: Dogs and cats.

REF.: P964 SIZE: 3.9" x 6.7"



Freddy
Special Mat-Breaker

FEATURES: 5 normal, and 4 spiked blades.
USE: Cutting from base to tip, thoroughly breaks mat and allows for finishing with the slicker brush.
ANIMAL: Dogs.

REF.: P970 SIZE: 1.6" x 6.3"



Apollo
9 Long Blades Mat-Breaker

FEATURES: Corrugated metal blades (1.89") and bamboo body.
USE: For knots and mats, cutting from base to tip, gently breaking the mat before finishing with brushing.
COAT TYPE: Medium and long.
FOR: Dogs.

REF.: P947 SIZE: 7" x 2.3"



Apollo
9 Short Blades Mat-Breaker

FEATURES: Pins 1.0" wavy-edged metal blades with bamboo body.
USE: For knots and tangles, cutting from base to tip, gently breaking the mat before finishing with brushing.
ANIMAL: Dogs and cats.

REF.: P948 SIZE: 6.4" x 1.5"



Boomer
1-Blade Mat-Breaker

FEATURES: 1 hooked blade
USE: For knots and mats, even mats very close to the skin. Ideal for creating cords.
ANIMAL: Dogs and cats.

REF.: P958 SIZE: 2.8" x 2.4"



TOOLS
NATURE COLLECTION

02.4 Ruber Pads

Exclusive design with improved grip for greater deshedding.



Laika
Red Rubber Pad

FEATURES: Small rubber teeth.
USE: Removes shedding hair.
TYPE OF COAT: Short.
FOR: Dogs.

REF.: P820 SIZE: 5,5" X 3,5"



Laika
Green Rubber Pad

FEATURES: Special rubber teeth.
USE: Thoroughly removes shedding hair.
TYPE OF COAT: Short, double-layered.
FOR: Dogs.

REF.: P821 SIZE: 5,5" X 3,5"



Laika
Blue Rubber Pad

FEATURES: Big rubber teeth.
USE: Removes shedding hair.
TYPE OF COAT: Double-layered and Nordic
FOR: Dogs.

REF.: P825 SIZE: 5,5" X 3,5"



TOOLS
NATURE COLLECTION

02.5 Hygiene

Top tools for the upkeep of nails.



NEW



Sasha
Ergo Nail Clipper M

FEATURES: 0.8" stainless steel blades
USE: For trimming nails.
FOR: Medium and large dogs.

REF.: P818 SIZE: 2,5" X 5,5"



Duke
Nail Clipper M

FEATURES: 0.8" stainless steel blades
USE: For trimming nails.
FOR: Medium and large dogs.

REF.: P250 SIZE: 1.8" x 6.5"



Duke
Nail Clipper S

FEATURES: 0.6" stainless steel blades
USE: For trimming nails.
FOR: Medium and large dogs.

REF.: P960 SIZE: 1.6" x 5.1"



Lady
Mini Nail Clipper

FEATURES: 0.4" stainless steel blades
USE: For trimming cat and dog nails.
FOR: Puppies, small dogs and cats.

REF.: P961 SIZE: 2.6" x 4.3"



Daisy
Nail File

FEATURES: Chrome and bamboo
USE: To file and polish nails
FOR: Cats and dogs.

REF.: P962 SIZE: 0.8" x 7.9"





TOOLS
NATURE COLLECTION

02.6 Stripping

Tools for all stripping stages



Juno
Stripping Knife 01

FEATURES: 25 short, triangular teeth
USE: To thoroughly remove fine undercoat.
TYPE OF COAT: Wire-coat.
FOR: Dog.

REF.: P976 SIZE: 1" x 5.9"



Juno
Stripping Knife 02

FEATURES: 23 semi-straight teeth
USE: To thoroughly remove fine undercoat.
TYPE OF COAT: Spaniels and Setters
FOR: Dog.

REF.: P977 SIZE: 1" x 5.9"



Juno
Stripping Knife 03

FEATURES: Medium, triangular teeth.
USE: For finishes and definition.
TYPE OF COAT: Wire-coat.
FOR: Dog.

REF.: P971 SIZE: 1" x 5.9"



Juno
Stripping Knife 04

FEATURES: 17 medium, triangular and inclined (stainless steel).
USE: For removing medium undercoat.
TYPE OF COAT: Wire-coat.
FOR: Dog.

REF.: P975
SIZE: 1" x 5.9"



Juno
Stripping Knife 05

FEATURES: 17 medium, triangular teeth (stainless steel).
USE: For stripping thicker layers and removing medium undercoat.
TYPE OF COAT: Spaniels y setters.
FOR: Dog.

REF.: P978
SIZE: 1" x 5.9"



Juno
Stripping Knife 06

FEATURES: 15 large, inclined, triangular teeth (stainless steel)
USE: For removing thick undercoat quickly.
TYPE OF COAT: Wire-coat.
FOR: Dog.

REF.: P979
SIZE: 1" x 5.9"



Juno
Stripping Knife 07

FEATURES: 14 long, triangular teeth (stainless steel).
USE: For stripping medium-long coats.
TYPE OF COAT: Wire-coat.
FOR: Dog.

REF.: P972
SIZE: 1" x 5.9"



Juno
Stripping Knife 08

FEATURES: 13 long, triangular teeth (Stainless steel).
USE: For stripping long layers quickly.
TYPE OF COAT: Wire-coat.
FOR: Dog.

REF.: P980 SIZE: 1" x 5.9"



Juno
Stripping Knife 09

FEATURES: 12 double triangular teeth (stainless steel).
USE: For stripping long layers in the "rolling coats" technique.
TYPE OF COAT: Wire-coat.
FOR: Dog.

REF.: P981 SIZE: 1" x 5.9"



Juno
Stripping Knife 10

FEATURES: 8 very large, triangular teeth (stainless steel).
USE: For stripping over-grown, thick layers.
TYPE OF COAT: Wire-coat.
FOR: Dog.

REF.: P982 SIZE: 1" x 5.9"



Juno
Super Stripping Knife 11

FEATURES: 30 very large, triangular teeth.
USE: To thoroughly remove fine undercoat.
TYPE OF COAT: Spaniels y setters.
FOR: Dog.

REF.: P819 SIZE: 7" X 0,9"



TOOLS
NATURE COLLECTION

02.7 Left-handed Stripping

Tools for all stripping stages



NEW



Juno
Left-handed Stripping Knife 03

FEATURES: Medium triangular stainless steel teeth.
USE: Defines fur layers and perfect for finishing touches.
TYPE OF COAT: Wire-coat.
FOR: Dog.

REF.: P783 SIZE: 1" x 5.9"



NEW



Juno
Left-handed Stripping Knife 07

FEATURES: Long, triangular stainless steel teeth.
USE: Removes layers of medium and long hair.
TYPE OF COAT: Wire-coat.
FOR: Dog.

REF.: P784 SIZE: 1" x 5.9"



NEW



Juno
Left-handed Stripping Knife 10

FEATURES: Long, triangular stainless steel teeth.
USE: Removes dense and old shedded coat.
TYPE OF COAT: Wire-coat.
FOR: Dog.

REF.: P785 SIZE: 1" x 5.9"



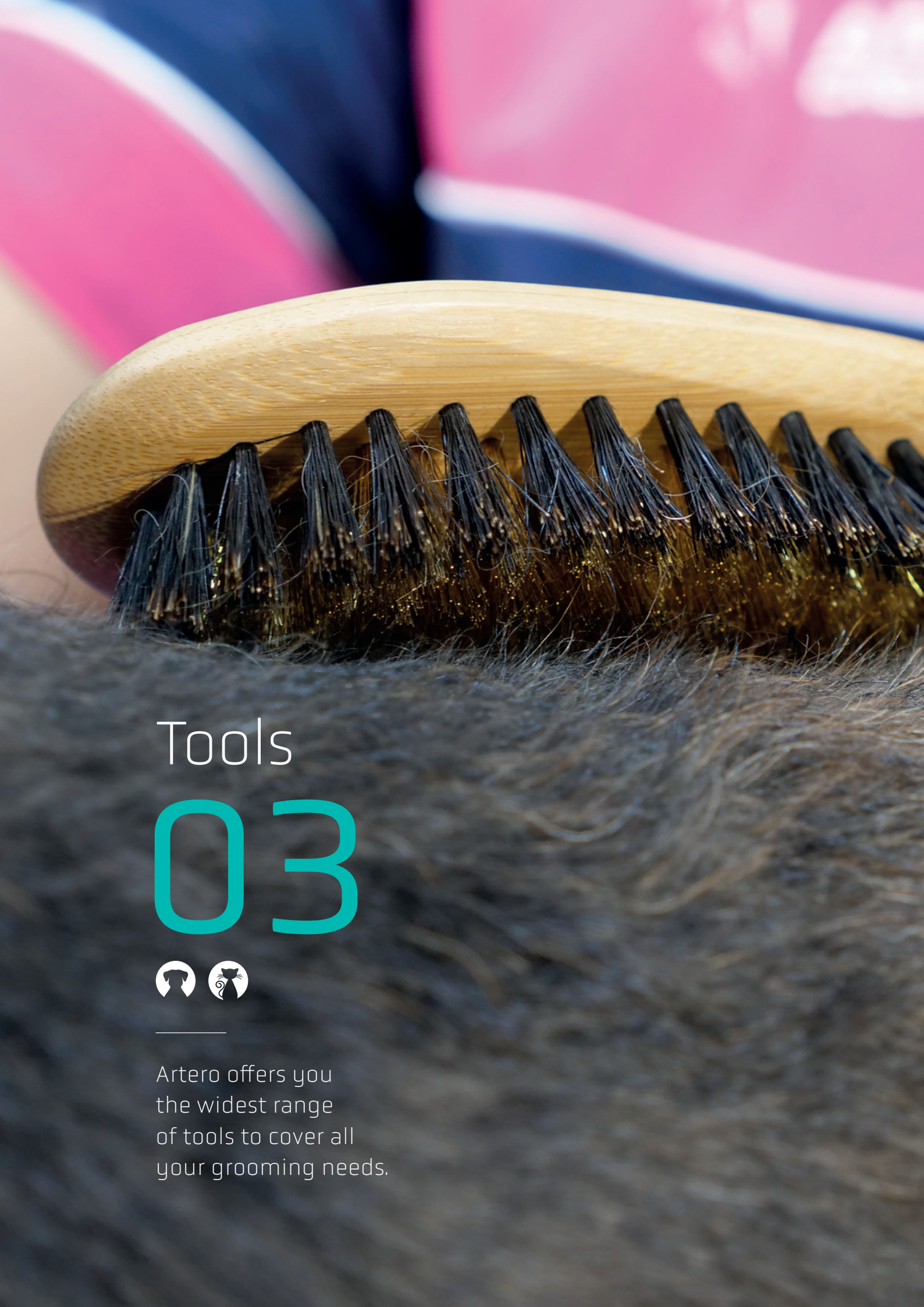
NATURE COLLECTION

Stripping

Technical features

REF	BLADE	N° TEETH	SHAPE OF TEETH	TYPE OF WORK	COAT TYPE	HIGHLIGHTS
P976	01	25	Triangular fine	Flatwork finish work, removing fine undercoat	Wire coats	Plucks finer hair for perfect finishes
P977	02	23	Straight Medium length	Removes undercoat Setters, Spaniels	Setters, Spaniels, fine wire coats	Avoids breaking the hair
P971 - P783*	03	20	Triangular fine	Finish work	Wire coats	For a flat and smooth finish
P975	04	17	Angulated triangular	Removes undercoat	Terriers, Spaniels and setters	Removes undercoat without irritating the skin
P978	05	17	Triangular	Stripping short + medium layers	Fine wire coats	Ideal for dogs with 2 coats at 8 weeks
P979	06	15	Angulated triangular long	Removes thick undercoat	Schnauzers, Spaniels	Quick removal of undercoat, more effective carding
P972 - P784*	07	14	Triangular rounded-tip	Stripping layers	Schnauzers	An all-rounder for all salons
P980	08	13	Triangular rounded-tip	Stripping thick and dense coats	Terriers	Very fast on long layers and thick coats
P981	09	12	Double teeth	Stripping rolling coats	Wire coats	Ideal for rolling coats, blending + tails
P982 - P785*	10	8	Giant triangular	Extreme work	Wire coats	Quick and comfortable on thick, hairy coats
P819	11	30	Long, triangular teeth with rounded tip	Carding out undercoat	Spaniels, Setter - wire-coats	Helps remove undercoat thanks to it's length

*LEFT-HANDED



Tools 03



Artero offers you the widest range of tools to cover all your grooming needs.



Carbon Parting Comb

FEATURES: Regular teeth. Chrome tail.
USE: For brushing, tidying and straightening the coat. Ideal for parting the hair, thanks to its metallic tip. Perfect for creating topknots.
COAT TYPE: Long and poodles.
FOR: Dogs.

REF.: K622 SIZE: 8.7" x 0.8"



Giant Gold Comb

FEATURES: Conical teeth. Chrome.
USE: For lifting, teasing, straightening and tidying the coat during cutting.
COAT TYPE: Medium and long, dense or curly.
FOR: Medium and large dogs and cats.

REF.: P357 SIZE: 9.75" x 1.4"



Small Dematting Slicker

FEATURES: Flexible 0.6" pins.
USE: Grey side for brushing and straightening the coat. Black side for removing knots and tangles.
COAT TYPE: All types of coats and tangles.
FOR: Small, medium dogs and cats.

REF.: P482 SIZE: 4.3" x 2"



Small Protected Pin Slicker

FEATURES: Flexible protected 0.5" pins.
USE: For brushing the coat and removing knots in short and mid-length coats. Does not irritate the skin.
COAT TYPE: All types.
FOR: Small dogs, puppies and cats.

REF.: P356 SIZE: 2.8" x 1.5"



Double-Sided Slicker Brush

FEATURES: Flexible 0.8" pins.
USE: Highly effective for brushing and straightening the coat.
COAT TYPE: All types and lengths.
FOR: Cats and dogs.

REF.: P308 SIZE: 9"



Retractable Pin Rake

FEATURES: 20 teeth.
USE: T-shaped for gently removing knots and trapped dead hair from the coat. The pins adapt to the contours of the pet.
COAT TYPE: Shedding (short, double coat, Nordic breeds, etc.)
FOR: Cats and dogs.

REF.: P359 SIZE: 0.8" x 6"



Paddle Brush

FEATURES: Natural boar and Nylon bristles.
USE: For brushing and tidying the coat.
COAT TYPE: Wiry, medium and long.
FOR: Small, medium and large dogs.

REF.: K589 SIZE: 3.3" x 9"



Deshedder

FEATURES: 44 teeth.
USE: Removes the undercoat on cats and dogs and brushes out shedding hair in short-haired dogs.
COAT TYPE: Short, wire-coat.
FOR: Cats and dogs.

REF.: P462 SIZE: 3.5" x 6"



Xtreme Coat

FEATURES: Double-sided blades: 13 on one side and 25 on the other.
USE: Multi-purpose. For removing knots and tangles. For thorough undercoat removal and helping with stripping.
COAT TYPE: Short, wire-coat, spaniels, double coat.
FOR: Cats and dogs.

REF.: P314 SIZE: 3.54" x 6.7"



Trio Trim Stripping Knife

FEATURES: 3 stainless steel toothed sides.
USE: For flat-work, stripping and plucking.
TRIPLE FUNCTION: large teeth for simultaneously working on wiry hair and the undercoat, fine teeth for defining wiry hair and serrated tip for plucking and detail.
COAT TYPE: Wire-coat.
FOR: Dogs.

REF.: P342



Thinner Non-Cut Stripping Knife

FEATURES: 32 stainless steel teeth.
USE: For stripping wiry and silky coat without the risk of cutting the hair and for removing the undercoat. For thin coats.
COAT TYPE: Wire-coat, spaniels and setters.
FOR: Dogs.

REF.: P334 SIZE: 6.7"



Super Stripping Knife

FEATURES: 32 stainless steel teeth.
USE: For stripping wiry coat and removing the undercoat. All coat types.
COAT TYPE: Wire-coat, spaniels and setters.
FOR: Dogs.

REF.: P336 SIZE: 6.3"



Green Stripping Knife

FEATURES: 9 stainless steel teeth.
USE: For stripping very dense or overgrown coats.
COAT TYPE: Wire-coat.
FOR: Dogs.

REF.: P360 SIZE: 1" x 6"



Green Ruber Mitt

FEATURES: Rubber.
USE: For removing shedding hair in mid-long haired cats and dogs, helping to renew it.
COAT TYPE: Shedding (short, double coat, Nordic breeds, etc.)
FOR: Cats and dogs.

REF.: P385 SIZE: 3" x 5"



Mitts

FEATURES: Double-sided, 1 rubber and 1 fabric.
USE: For removing dead fur in double-coated dogs and helping to renew the coat. Removes pet hair from clothes, carpets and sofas. Also useful for shampooing.
COAT TYPE: Shedding (short, double coat, etc.)
FOR: Cats and dogs.

REF.: P337



Undercoat Stripping Knife

FEATURES: 20 stainless steel teeth.
USE: For removing the undercoat.
COAT TYPE: Wire-coat, spaniels and setters.
FOR: Dogs.

REF.: P335 SIZE: 6.3"



Stripping Stone

FEATURES: Very porous surface.
USE: For removing the undercoat, stripping very fine hair or defining layers.
COAT TYPE: Wire-coat, spaniels and setters.
FOR: Dogs.

REF.: P642





Powdex

EFFECT: Dries hair grease and provides an anti-slip effect to facilitate stripping. Also lightens dull or stained white coats.

USE: For stripping: on dogs with fine, greasy, very smooth or very dense coats. For lightening: on show dogs to enhance their natural white color or to mask staining.

INSTRUCTIONS FOR USE: For stripping: dip fingers in powder. Re-apply as needed. For whitening: apply the powder with a bristle brush.

17.64 OZ. REF.: H928



Latex Thimbles

FEATURES: Latex.
USE: Protects the skin and improves grip for removing hair.
COAT TYPE: Wire-coat, spaniels and setters.
FOR: Dogs.

20 Units

SIZE: M REF.: P648
SIZE: L REF.: P649



Rubber Thimbles

FEATURES: Rubber.
USE: Protects the skin and improves grip for removing hair.
COAT TYPE: Wire-coat, spaniels and setters.
FOR: Dogs.

5 Units

REF.: P647 N° 3
REF.: P646 N° 2
REF.: P645 N° 1
REF.: P644 N° 0
REF.: P643 N° 00



Finger Toothbrush

FEATURES: Silicone sizes M & L.
USE: A convenient way to brush pet's teeth.
FOR: Cats and dogs.

REF.: P309



Strong Nail File

FEATURES: Chrome.
USE: For filing nails.
FOR: Cats and dogs.

REF.: P267 SIZE: 8"



Electric Nail File

FEATURES: With battery and removable head.
USE: Used to file nails.
FOR: Small to medium cats and dogs.

REF.: Y349

TOOLS

03.2 Model Dogs

Perfect your cutting skills with these ideal training dogs



Bichon Head and Body Hairpiece

The hairpiece for improving cutting techniques and defining Bichon cuts.
USE: Use with model dog mannequin for training, practice cuts, shaping and styling research.
INSTRUCTIONS FOR USE: Cover the mannequin and add the eyes and nose. Brush and cut.

REF.: Y127

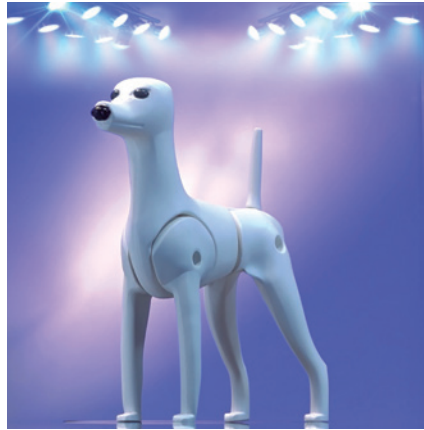


Bichon Model Dog

Model dog with a wide head to perfect the styling of more robust breeds.
USE: Use with a hairpiece as a model for training, practice cuts, shaping and styling research.
INSTRUCTIONS FOR USE: Assemble the 4 legs, tail, nose and eyes according to the instructions.

REF.: Y128





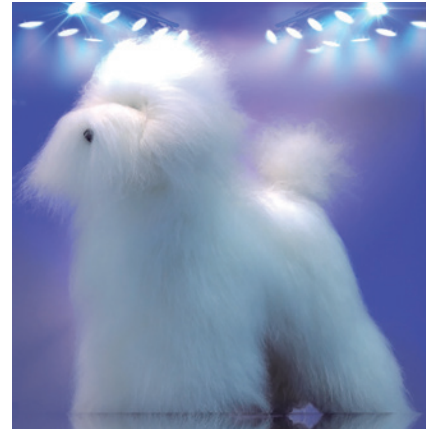
Poodle Model Dog

Ideal for perfecting your scissoring skills.

USE: Use with a hairpiece as a model for training, practice cuts or styling research.

INSTRUCTIONS FOR USE: Assemble the 4 legs, tail, nose and eyes according to the instructions.

REF.: Y123



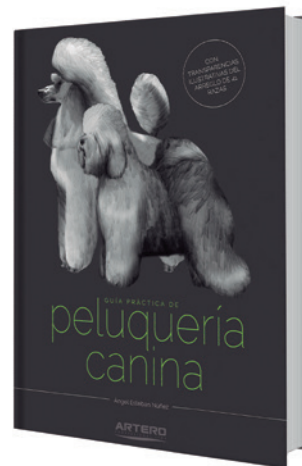
Poodle Head and Body Hairpiece

The hairpiece for improving cutting techniques and defining new cuts.

USE: Use with model dog mannequin for training, practice cuts or shaping and styling research.

INSTRUCTIONS FOR USE: Cover the mannequin and add the eyes and nose. Brush and cut.

REF.: Y122



Practical Dog Grooming Guide

Professional groomers with step-by-step guide. Detailed trims with simple and clear solutions. Up-to-date styles with techniques adapted to each breed. **Aimed at all professionals of the Dog-Grooming world.** Original illustrations with transparencies. The book includes 352 pages with **41 breeds**.

REF.: Y864

SPANISH ONLY



TOOLS

03.3 Bathing



NEW



Focus

Protective ear bands

FEATURES: Elastic cloth bands.

USE: To protect dogs from the noise generated by the dryer. Set 3 sizes.

FOR: Dog all sizes

REF.: A511

SIZE: L: 8,2" x 7" ■ M: 7,8" x 5,5" ■ S: 4,7" x 4,7" ■



NEW



Samba

Large Towel

FEATURES: Ionised activated carbon.

USE: Ultra-fast water absorption; it regains its absorbency after spin-drying.

FOR: Medium and large dogs

REF.: A514

SIZE: 34,2" x 26,7"



Extra Ultra-Absorbent Towel

FEATURES: Ultra absorbent-ionized carbon.
USE: Dries excess water very quickly.
FOR: Cats and dogs.

REF.: A418 SIZE: 33.5" x 13"



Microfibre Towel

FEATURES: Microfibre.
USE: For drying pets after bathing. Removes excess moisture.
FOR: Cats and dogs.

REF.: A507 SIZE: 39.37" x 23.60"
 REF.: A508 SIZE: 39.37" x 23.60"



Small towel with pockets

FEATURES: Microfibre 300gr/m2.
USE: For drying small pets, use after draining excess water in the bathtub, the pockets serve to hold the towel and speed up drying.
FOR: Dogs, cats + rabbits.

REF.: A509 SIZE: 25" x 9"



Wide towel with pockets

FEATURES: Microfibre 300gr/m2.
USE: For drying pets, use after removing excess water in the bathtub, the pockets serve to hold the towel and speed up drying.
FOR: Dogs and cats.

REF.: A510 SIZE: 39.3" x 19.7"



TOOLS

03.4 Table mats



Anti-Slip Splash Mat

PVC curly bath mat. Complete non-slip effect for inside the bath. The animal will feel more relaxed and at ease during the bathing process. Easy to wring out all the water when finished.

REF.: W832 SIZE: 42.13" x 22.05"



Anti-Slip Surface Mat

Anti-slip table-top mat. 5mm thick making it comfortable and relaxing for your pet.

REF.: W831 SIZE: 45.28" x 23.62"



Table Mat Pink

Mat to cover the table top surface providing support and with 5mm thick padded rubber allows the pet to rest during grooming.

REF.: W826 SIZE: 45" x 23.6"
 REF.: W828 SIZE: 33.5" x 21.6"



Table Mat Blue

Mat to cover the table top surface gaining support and with 5mm thick padded rubber for pet resting during grooming.

REF.: W825 SIZE: 45" x 23.6"
 REF.: W827 SIZE: 33.5" x 21.6"



TOOLS

03.5 Muzzles

Comfortable and easy to use with original designs, these muzzles are available in all sizes



Silicone Muzzles

FEATURES: Silicone with adjustable strap and safety buckle.
USE: To prevent dogs from biting other animals, people or objects.
FOR: Dogs.

YELLOW

- REF.: P345 SIZE: S
- REF.: P347 SIZE: M
- REF.: P349 SIZE: L
- REF.: P353 SIZE: XL



Patterned Music Muzzle

FEATURES: Nylon, washable.
USE: Avoids biting when handling dogs.
FOR: Dogs.

MUSIC

- REF.: P363 SIZE: XS
- REF.: P364 SIZE: S
- REF.: P365 SIZE: M
- REF.: P366 SIZE: L
- REF.: P367 SIZE: XL



Clothing

04



Artero presents a new range of groom wear with fun and flattering designs made from top quality and hair-repellent material. Quick drying and no ironing required.



FASHION

04.1 Tops & Bottoms

Design combined with practicality transforms a uniform into a fashionable work garment



Nairobi
Black Blouse

Black feminine blouse with funnel neck and zip opening. Puff sleeves with continuous logo. Elasticated waistband, breathable hair-repellent material.

- | | | | |
|-------------------|-----------------|-------------------|------------------|
| REF.: W899 | SIZE: XS | REF.: W902 | SIZE: L |
| REF.: W900 | SIZE: S | REF.: W903 | SIZE: XL |
| REF.: W901 | SIZE: M | REF.: W904 | SIZE: XXL |



Marsella
Printed Apron Dress

Sleeveless, adjustable apron dress. Shirt collar, adjustable with belt and decorative patch. Breathable hair-repellent material.

- | | |
|-------------------|---------------------|
| REF.: W917 | SIZE: XS/S |
| REF.: W918 | SIZE: M/L |
| REF.: W919 | SIZE: XL/XXL |



Op-Art Tokyo
Dress Shirt

Shirtdress style smock. The front reaches just above the knees while the back is longer. Adjustable sleeve. Hair repellent material—ideal, trendy and fun for busy salons.

- | | | | |
|-------------------|-----------------|-------------------|------------------|
| REF.: W842 | SIZE: XS | REF.: W845 | SIZE: L |
| REF.: W843 | SIZE: S | REF.: W846 | SIZE: XL |
| REF.: W844 | SIZE: M | REF.: W847 | SIZE: XXL |



Blue Niza
Smock

Women's fitted smock with zip fastening and side pocket. Blue with fucsia detail.

- | | | | |
|-------------------|-----------------|-------------------|------------------|
| REF.: W604 | SIZE: XS | REF.: W607 | SIZE: L |
| REF.: W605 | SIZE: S | REF.: W608 | SIZE: XL |
| REF.: W606 | SIZE: M | REF.: W609 | SIZE: XXL |



Niza Poodle
Smock

Women's fitted smock with zip fastening and side pocket. Turquoise and pink.

- | | | | |
|-------------------|-----------------|-------------------|------------------|
| REF.: W801 | SIZE: XS | REF.: W805 | SIZE: XL |
| REF.: W802 | SIZE: S | REF.: W806 | SIZE: XXL |
| REF.: W803 | SIZE: M | REF.: W829 | SIZE: 3XL |
| REF.: W804 | SIZE: L | REF.: W830 | SIZE: 4XL |



Helsinki
Green T-shirt



Unisex turquoise blouse with bomber jacket collar. Decorative patches, zipper on collar, removable scissor holder. Breathable, hair-repellent material.

- REF.: **W905** SIZE: XS
- REF.: **W906** SIZE: S
- REF.: **W907** SIZE: M
- REF.: **W908** SIZE: L
- REF.: **W909** SIZE: XL
- REF.: **W910** SIZE: XXL

Berlin
Cargo Trousers



Black cargo trousers with patch. Adjustable ankle with zip, adjustable waist with elastic and drawcord. 3 pockets and a side scissor holder. Breathable hair-repellent material.

- REF.: **W911** SIZE: XS
- REF.: **W912** SIZE: S
- REF.: **W913** SIZE: M
- REF.: **W914** SIZE: L
- REF.: **W915** SIZE: XL
- REF.: **W916** SIZE: XXL

Leggings Chic

Black, heavy-duty, figure enhancing stretch pants with logo and paw print design.

- REF.: **W819** SIZE: XS
- REF.: **W820** SIZE: S
- REF.: **W821** SIZE: M
- REF.: **W822** SIZE: L
- REF.: **W823** SIZE: XL
- REF.: **W824** SIZE: XXL



Black Trousers

Unisex slim-fit trousers with adjustable elastic waist.

- REF.: **W535** SIZE: XS
- REF.: **W541** SIZE: M
- REF.: **W542** SIZE: L
- REF.: **W543** SIZE: XL
- REF.: **W544** SIZE: XXL



Clothing measures

Know your measurements

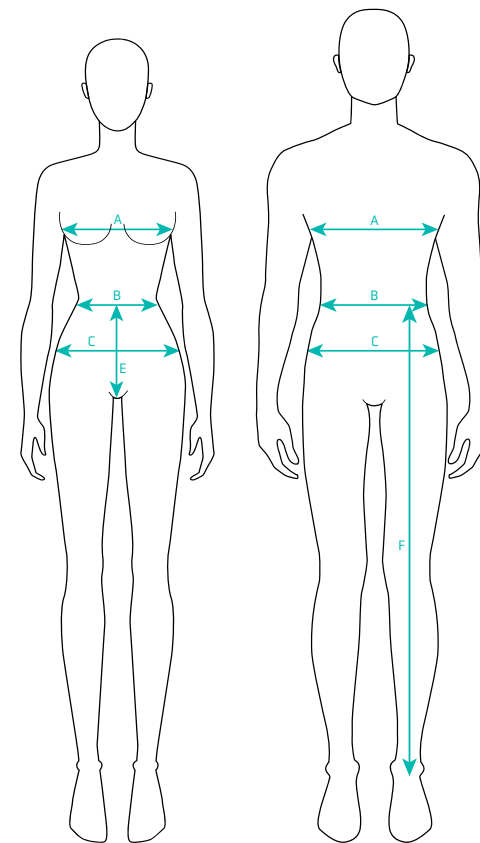
When purchasing a piece of Artero workwear it is very important to know your measurements so that you choose the correct size for you. Please refer to the following charts to determine your exact size.

What should I measure? Chest, waist and hips

In order to measure correctly, hold the tape-measure loosely and horizontally, and wrap round the relevant part of your body. It helps to do this in front of a mirror, and it is best not to have any loose-fitting clothes on when you measure.

For smocks, shirts and t-shirts, you should measure:

- CHEST: Measure around the body at the most prominent point of the chest and back. Just below the armpit.
- WAIST: Measure round your waist quite tightly.
- HIP: Measure round the widest part of the hip.



SMOCKS AND BLOUSES

REF.	NAME	SIZE	CHEST A	WAIST B	HIPS C	LENGHT D
W899	NAIROBI	XS	17,7	17,7	18,8	26,5
W900	NAIROBI	S	18,5	18,5	19,6	26,8
W901	NAIROBI	M	19,3	19,3	20,4	27
W902	NAIROBI	L	20	20	21,25	27,4
W903	NAIROBI	XL	20,8	20,8	25,5	27,7
W904	NAIROBI	XXL	21,8	21,8	23	28
W917	MARSELLA	XS / S	17,7	26,7	35,8	36,6
W918	MARSELLA	M / L	19,3	28,3	37,4	37,4
W919	MARSELLA	XL / XXL	20,8	29,9	38,9	38,1
W604	BLUE NIZA SMOCK	XS	17,5	15,5	20	27
W605	BLUE NIZA SMOCK	S	18	16,5	20,5	28
W606	BLUE NIZA SMOCK	M	19	17,5	21,5	28,5
W607	BLUE NIZA SMOCK	L	20	18,5	22,5	29
W608	BLUE NIZA SMOCK	XL	23	21,5	25	29,5
W609	BLUE NIZA SMOCK	XXL	24	22,5	26	30
W801	NIZA POODLE	XS	18	17	19,5	28
W802	NIZA POODLE	S	19	18	20,5	28,5
W803	NIZA POODLE	M	19,5	18,5	21	29
W804	NIZA POODLE	L	20,5	19	22	29
W805	NIZA POODLE	XL	21,5	19,5	22,5	29,5
W806	NIZA POODLE	XXL	22	21	23,5	30
W829	NIZA POODLE	3XL	22,5	21,5	24,5	30,5
W830	NIZA POODLE	4XL	23	22,5	25	31
W905	HELSINKI	XS	18,7	18,8	19	28,5
W906	HELSINKI	S	19,8	20	20,3	28,9
W907	HELSINKI	M	21	21,2	21,4	29,1
W908	HELSINKI	L	22,2	22,4	22,6	29,4
W909	HELSINKI	XL	23,4	23,6	23,8	29,7
W910	HELSINKI	XXL	24,6	24,8	25	30

SHIRT DRESS

REF.	NAME	SIZE	CHEST A	BOTTOM WIDTH G	LENGHT F	BACK LENGHT
W842	TOKYO OP-ART	XS	21	38	30,5	40
W843	TOKYO OP-ART	S	22	39,5	31	40,5
W844	TOKYO OP-ART	M	23,5	41	31,5	41
W845	TOKYO OP-ART	L	24,5	42	32	41,5
W846	TOKYO OP-ART	XL	25,5	43	32,5	42
W847	TOKYO OP-ART	XXL	27	44	33	42,5

LEGGINGS / PANTS

REF.	NAME	SIZE	WAIST B	HIPS C	RISE E	LENGHT F
W819	LEGGINS CHIC	XS	10	17	10	34,5
W820	LEGGINS CHIC	S	10	18	10	34,5
W821	LEGGINS CHIC	M	11	19	10,5	35
W822	LEGGINS CHIC	L	11	19,5	11	35
W823	LEGGINS CHIC	XL	12	21	11,5	35
W824	LEGGINS CHIC	XXL	13	21,5	12	35
W535	BLACK TROUSERS	XS	10	17,5	10	41
W536	BLACK TROUSERS	S	11	17,5	10	41
W541	BLACK TROUSERS	M	12,5	19	10,5	41
W542	BLACK TROUSERS	L	13,5	21	11	41
W543	BLACK TROUSERS	XL	14	22	11,5	41,5
W544	BLACK TROUSERS	XXL	15	23,5	12	42
W911	BERLIN TROUSERS	XS	12,2 / 18	19,6	28,3	37,9
W912	BERLIN TROUSERS	S	12,9 / 18,8	20,8	28,7	38,1
W913	BERLIN TROUSERS	M	13,7 / 19,6	22	29,1	38,4
W914	BERLIN TROUSERS	L	14,5 / 20,4	23,2	29,3	38,5
W915	BERLIN TROUSERS	XL	15,5 / 21,4	24,4	29,5	38,7
W916	BERLIN TROUSERS	XXL	16,5 / 22,4	25,5	29,7	38,9



FASHION

04.2 Aprons

Practical and durable aprons for the bathing process



ARTERO Grooming Slam Apron

Cool, lightweight, waterproof, hair repellent fabric with neck strap and adjustable waist. Black with logo print.

REF.: W416 SIZE: ONE SIZE

Clippers

05



Artero offers a complete range of professional clippers that use the latest technology and make work in the salon much easier and more comfortable.





CLIPPERS

05.1 Clippers

Light and fast.
Capable of
tackling the
toughest of jobs



Zen

The most powerful clipper!

ZEN is an A5 type clipper with 2 speeds. The first speed of 2500 rpm is ideal for regular work where the blades will not overheat and the second speed of 3000 rpm for very dense or finishing work. A powerful, robust clipper designed for demanding jobs. With a super-durable battery.

INCLUDES: Charging base, 1 battery, No. 10 [1.6 mm] cutting head, mineral oil and brush

REF.: M345 ■

REF.: M344 ■



Hit

Fast, lightweight clipper with a long-lasting battery.

Nominated USA Product of the Year in its first year. Withstands prolonged use, works on all coat types.

INCLUDES: No. 10 blade [1.6mm], charger base, 2 batteries, mineral oil, brush and Artero Oil Fresh.

REF.: M347



Premium

Powerful, user-friendly clipper.

Has 2 speeds to adapt to any type of work. Super-resistant 3 meter cable. For daily use on all types of coats and conditions.

INCLUDES: No. 10 blade [1.6mm], charger base, 6 plastic comb attachments [3, 6, 9, 12, 15 and 18mm], mineral oil, brush and Artero Oil Fresh.

REF.: M339 ■

REF.: M357 ■

REF.: M358 ■





CLIPPERS

05.2 Trimmers



Spektra

The fastest clipper on the market.

With electronic control and display indicating height, RPM, battery time and blade lubrication level. Offers the best cutting finishes, both with the comb attachments and blade, and great endurance that allows you to work all day.

INCLUDES: Charger base, plastic comb attachments (3, 6, 9, 12, 15, 18, 21 and 25mm), mineral oil, brush and Artero Oil Fresh.

REF.: M629



X-Tron

Maximum power for a small, ergonomic body.

With a very long-lasting battery and control display for speed, remaining work time and blade lubrication level. An all-rounder capable of withstanding intense work. This quiet tool with reduced vibration lets you trim sensitive areas without any problems.

INCLUDES: Charger base, 2 double plastic comb attachments (3-6, 9-12mm), mineral oil, brush and Artero Oil Fresh.

REF.: M592



Reaktor

The Groomer's Trimmer.

Reaktor is a machine that goes from 5000 to 7000 revolutions per minute in 5 speeds offering a polished finish without marks in the cut. With a sturdy, narrow-toothed blade to work with the best definition on the finest and smoothest hair. Adjustable cutting height and trims for fast, quality trims.

INCLUDES: Charger Base, 1'5, 3, 6, 9, 9, 12mm, 0'9-1'2mm blade, mineral oil and brush and Artero Oil Fresh.

REF.: M658



CLIPPERS

05.3 Detailers

Small, light and very quiet, the perfect clippers for reaching those difficult areas



Divinity

The lightest clipper.

Divinity is a very light, yet powerful clipper. 2 speeds of 5000RPM and 6000RPM. This is the only clipper to include 2 blades - 1 x Regular and 1 x T-shaped blade for achieving maximum trims. This is an all-round, powerful trimmer.

INCLUDES: Charging base, multi snap-on combs: 1.5, 4.5 + 6mm., 2 blades 0.4mm, mineral oil and brush and Artero Oil Fresh.

REF.: M643



Technical Information Clippers



	HIT	PREMIUM	SPEKTRA	XTRON	REAKTOR	DIVINITY	ZEN
Operation	Cordless	With Cord	With/without Cord	With/without Cord	With/without Cord	With/without Cord	Cordless
Battery	Lithium		Lithium	Lithium	Lithium	Lithium	Lithium
Power	15W	25W	7W	7W	7W	7W	7W
RPM	3000	2600 - 3000	5000 - 7000	5500 - 6500	5000 - 7000	5000 - 6000	2500 - 3000
Speed	1	2	5	3	5	2	2
Run Time	300 mins.		190 mins. 200 mins. 205 mins. 235 mins. 250 mins.	120 mins. 135 mins. 155 mins.	190 mins. 200 mins. 205 mins. 230 mins. 240 mins.	150 mins. 120 mins.	300 mins.
Charge Time	180 mins.		180 mins.	90 mins.	180 mins.	60 mins.	180 mins.
Charging Base	●		●	●	●	●	●
Weight	12.35 OZ.	14.11 OZ.	8.9 OZ.	6.53 OZ.		4.58 OZ.	12,80 OZ.
Blade Type	A5	A5	Ceramic	Ceramic	Ceramic	T-Shape + regular	A5
Cutting Length blade incl.	n° 10 - 1,6 mm	n° 10 - 1,6 mm	1 - 1,9 mm	1 - 1,9 mm	0,9 - 1,2 mm	0,4 mm	n° 10 - 1,6 mm
Snap-On Comb		6	8	2	5		
Cutting height Undercuts		3/6/9/12 15/18 mm	3/6/9/12/15 18/21/25 mm	3/6 mm 9/12 mm	1,5/3/6 9/12mm	1,5/3 4,5/6mm	
Voltage	100 - 240 V	100 - 240 V	100 - 240 V	100 - 240 V	100 - 240 V	100 - 240 V	100 - 240 V
Plug Type	Multiplug	Multiplug	Multiplug	Multiplug	Multiplug	Multiplug	Multiplug
Includes	Oil and Brush	Oil and Brush	Oil and Brush	Oil and Brush	Oil and Brush	Oil and Brush	Oil and Brush
Dimensions	7.5" x 1.8" x 1.7"	6.6" x 1.8" x 1.8"	7.7" x 1.6" x 1.6"	6.3" x 1" x 1.4"	7.2" x 1.8" x 1.5"	6" x 1.6" x 1.5"	26" x 2" x 1.6"
Carry-Case	●	●					

Artero Blades A5

n° 40 - 0.1 mm REF.: C625	n° 30 - 0.5 mm REF.: C624	n° 15 - 1 mm REF.: C623	n° 10 - 1.6 mm REF.: C622	n° 8 - 1/2-2 mm REF.: C743	n° 7 - 3 mm REF.: C628	n° 7F - 3 mm REF.: C629
n° 5 - 6 mm REF.: C626	n° 5F - 6 mm REF.: C627	n° 4 - 9 mm REF.: C634	n° 4F - 9 mm REF.: C633	13 mm REF.: C737	16 mm REF.: C786	19 mm REF.: C787

Wide Blades

n° 30 - 0.5 mm REF.: C565	n° 10 - 1.5 mm REF.: C566	n° 7WF - 3.2 mm REF.: C567	n° 5WF - 6.4 mm REF.: C568	n° 4WF - 9.6 mm REF.: C569

Artero Ceramic Blades A5

n° 30 - 0.5 mm REF.: C572	n° 10 - 1.6 mm REF.: C561	n° 7F - 3 mm REF.: C562	n° 5F - 6 mm REF.: C563	n° 4F - 9 mm REF.: C564

4Cats Blades

n° 10 - 1.5 mm REF.: C573	n° 7F - 3.2 mm REF.: C574

Ceramic Spare Parts A5

Spare part for A5 blades
Compatible with A5 blades



Sizes: 50 and 40
REF.: C788

Sizes: 30, 15, 10, 8-1/2, 7, 7F, 5, 5F, 4, 4F, 3F, 5/8, 3/4
REF.: C789

Divinity

0.4 mm REF.: C794	T-BLADE - 0.4mm REF.: C793

Reaktor

0.9 mm - 1.2mm REF.: C795

Katana

Spektra blade



n° 10 - 1.6 mm
REF.: C796

NEW

X-Tron / Spektra

n° 40 - 0.1mm n° 30 - 0.5mm n° 15 - 1mm n° 10 - 1.6mm REF.: C747	7F - 3 mm REF.: C782	5F - 6 mm REF.: C783	4F - 9 mm REF.: C784	3F - 12 mm REF.: C785			

Artero Wide Snap-on Combs

Compatible with wide Artero blades.



SIZE	REF.	SIZE	REF.
3/8"	A313	7/8"	A317
1/2"	A314	1"	A318
5/8"	A315	1 1/4"	A319
3/4"	A316	1 1/2"	A321

NEW

Metalplex Set x9

Compatible with all A5 Artero, Oster, Moser + Andis, 1.6 mm or less.
SIZES: 3 mm / 6 mm / 10 mm / 13 mm / 16 mm / 19 mm / 22 mm / 25 mm

REF.: A351



Snap-on Combs Set x9

Compatible with all A5 Artero, Oster, Moser + Andis, 1.6 mm or less.
SIZES: 3 mm / 6 mm / 10 mm / 13 mm / 16 mm / 19 mm / 22 mm / 25 mm / 32 mm

REF.: A357



ARTERO

WIDE BLADE



For Dog Grooming by Artero

Wide blades for use with all A5 clippers. 0.4" wider cut resulting in a quicker finished groom. Can be sharpened. 5 different sizes. 10W & 30W compatible with wide combs up to 1.5"

Inspiring Style

artero.com



CLIPPERS

05.4 Accessories

Maintenance, care, and storage of blades and clippers will improve their longevity



Oil Fresh

The 6-in-1 blade and scissor spray by Artero. Lubricates and speeds up cutting, cools blades to be able to continue working, cleans hair and accumulated dirt, disinfects cutting surfaces, has a rustproofing action and prevents wear.

6.2 OZ. REF.: Y447



Blade Care

Lubricating and rustproofing liquid for blades. After use, submerge blades in this fluid to prolong their lifespan and improve cutting.

16.9 OZ. REF.: A453



Blade and Scissor Case

Fill the container with Artero Blade Care and submerge blades and scissors to lubricate them and prevent rusting.

REF.: A325



Oil Pen

Lubricating and rustproofing liquid for blades. After use, submerge blades to prolong their lifespan and improve cutting.

0.14 OZ. REF.: Y449

Scissors

06



The knowledge gained from years of experience is apparent in this wide range of elegant, functional and reliable scissors.

This top-quality range has been helping groomers create works of art for decades.





symbols

Type of Scissor

Razor Edge Scissors: Clean cuts and finishes.
Micro-Serrated: For pre-cutting and marking lines.
Chunkers: For marking lines and fast cutting.
Thinning: For blending and continuity between areas.

Features

- T** TITANIUM COATING
- PVD** DURABLE COATING
- 440C** 440C STEEL

Screw Type

- ROUND HEAD SCREW**
- SCREW AND BOLT**
- BALL-BEARING**
- HAND SCREW**
- A-LINK**

Finger Rests

- FIXED**
- REMOVABLE**

Thinning Scissors

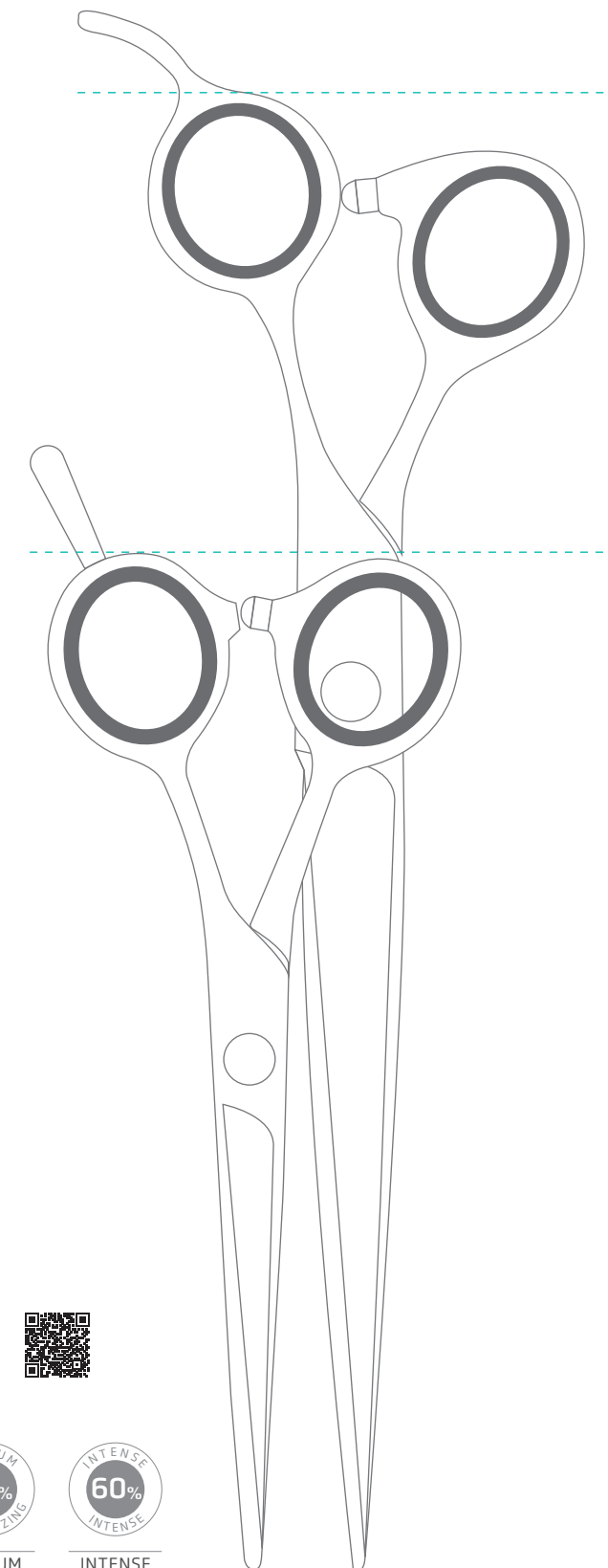
TEETH TYPE

FINE TEETH FOR FEATHERING AND BLENDING

WIDE TEETH FOR THINNING



- 10%** SOFT TEXTURIZING (SMOOTH)
- 15%** SOFT TEXTURIZING
- 20%** MODERATE TEXTURIZING
- 25%** MODERATE TEXTURIZING
- 30%** MODERATE TEXTURIZING
- 35%** MEDIUM TEXTURIZING
- 60%** INTENSE INTENSE



8 1/2" PULGADAS
 8"
 7 1/2"
 7"
 6 1/2"
 6"
 5 1/2"
 5"
 4 1/2"
 4"
 3 1/2"
 3"
 2 1/2"
 2"
 1 1/2"
 1"
 0 1/2"
 0"



SCISSORS

06.1 Razor Edge Scissors

Scissors with an acute sharpness giving the best and smoothest finish



NEW

Valkiria

Sturdy scissors that work effortlessly through dense coats and deliver a beautiful finish. No tip and bevelled edge for strength

REF: T71070 SIZE: 7"



Epika



Rose gold titanium coating, smooth, gliding cut providing even, velvety definition. Ideal for fine coats and finishing.

REF: T47760 SIZE: 6"
REF: T48770 SIZE: 7"
REF: T48780 SIZE: 8"



Excalibur



Robust, provides a clean cut for tackling jobs requiring power and resistance without losing definition.

REF: T34675 SIZE: 7.5"



Mystery



Straight cut for removing large amounts of hair every time. Smooth motion with blades that open widely and effortlessly. Capable of withstanding tough jobs.

REF: T49860 SIZE: 6"
REF: T49870 SIZE: 7"
REF: T49880 SIZE: 8"





Onix



Powerful scissors to tackle any coat. Versatile use with a sophisticated finish. Ergonomic and comfortable to hold.

- REF.: T45070 SIZE: 7"
- REF.: T45080 SIZE: 8"
- REF.: T45090 SIZE: 9"



One



A reliable all-rounder suitable for medium and dense coats. Light, comfortable cutting, ideal for everyday use.

- REF.: T48055 SIZE: 5.5"
- REF.: T48060 SIZE: 6"
- REF.: T48065 SIZE: 6.5"
- REF.: T48070 SIZE: 7"
- REF.: T48080 SIZE: 8"



SCISSORS

06.2 Micro-Serrated Scissors

Scissors with a great cutting capacity, ideal for pre-cuts and tough jobs



Magnum Ergo



Powerful, able to withstand a lot of cutting pressure. Blades open widely and effortlessly. Accurate cutting for creating master lines.

- REF.: T45880 SIZE: 8"





Queen



Very lightweight yet resistant cutting. Symmetrical handles give the blades an even force for cutting any coat type. Narrow blades to reach all nooks and crannies.

- REF.: T63565 SIZE: 6.5"
- REF.: T63570 SIZE: 7"
- REF.: T63575 SIZE: 7.5"



Satin



Helps create outlines in everyday cutting and remove length in pre-cutting. The balance between the handles and blades makes these scissors very resistant.

- REF.: T47270 SIZE: 7"
- REF.: T47275 SIZE: 7.5"
- REF.: T47385 SIZE: 8.5"



Satin Mini Straight



Symmetrical handles help control the opening of the blades and the rounded tip prevents them from harming the skin. Ideal for sanitary areas or skin conditions.

- REF.: T45845 SIZE: 4.5"



SCISSORS

06.3 Curved Scissors

Curved blades help create forms, even in the most difficult of areas



Onix Curvy



Powerful scissors to tackle any coat. Versatile use with a sophisticated finish.

- REF.: T46080 SIZE: 8"





Magnum Curvy



Powerful, able to withstand a lot of cutting pressure. Blades open widely and effortlessly. Accurate cutting for marking out master lines.

REF.: T45770 SIZE: 7"
REF.: T45780 SIZE: 8"



Slalom Chunkers Curvy



With the exclusive shape of teeth and curved blades, these chunkers will make work fast and efficient, and allow for creating new forms.

REF.: T70975 SIZE: 7,5" TEETH: 24



One Curvy



A reliable all-rounder suitable for medium and dense coats. Light, comfortable cutting, ideal for everyday use.

REF.: T49080 SIZE: 8"



Satin Curvy



Helps create strong outlines in everyday cutting and aids removing length in pre-cutting. The balance between the handles and blades makes these scissors very resistant.

REF.: T47265 SIZE: 6.5"
REF.: T47375 SIZE: 7.5"
REF.: T47485 SIZE: 8.5"



Slalom Curvy



With the capacity to lightly blend, together with its curve and lightness, the Slalom Curvy is a breakthrough in blending scissors.

REF.: T48165 SIZE: 6.5" TEETH: 45
REF.: T70970 SIZE: 7" TEETH: 48



Satin Curvy Mini



Symmetrical handles help control the opening of the blades and the rounded tip prevents them from harming the skin. Ideal for sanitary areas or skin conditions.

REF.: T34345 SIZE: 4.5"





Fusion Curvy Black



With bevelled-edge blades for accurate facial and expression cutting. Symmetrical handles to control the opening of the blades. The aluminium handles make this a lighter scissor.

REF.: T46060 SIZE: 6"
REF.: T46070 SIZE: 7"



Fusion Curvy Pink



With bevelled-edge blades for accurate facial and expression cutting. Symmetrical handles to control the opening of the blades. The aluminium handles make this a lighter scissor.

REF.: T46160 SIZE: 6"



Fusion Curvy Gold



With bevelled-edge blades for accurate facial and expression cutting. Symmetrical handles to control the opening of the blades. The aluminium handles make this a lighter scissor.

REF.: T46260 SIZE: 6"



SCISSORS

06.4 Chunkers

Wide, strong teeth allow for quick cutting and maximum texturizing



Alp 43



With ball bearing for extra-smooth cutting. These scissors thin the coat, creating natural, velvety definition in cuts.

REF.: T624375 SIZE: 7.5" TEETH: 43



Alp 29

With ball bearing for extra-smooth cutting. These scissors thin the coat, creating natural, velvety definition in cuts.

REF.: T622960 SIZE: 6" TEETH: 29



Alp 16

With ball bearing for extra-smooth cutting. These scissors thin the coat, allowing the groomer to create beautiful definitions in mid-density coats.

REF.: T622975 SIZE: 7.5" TEETH: 16



One Chunkers 27

The most versatile chunkers due to their size and teeth. Capable of marking out and defining cuts. With manual tension screw for easy adjustments.

REF.: T47070 SIZE: 7" TEETH: 27



One Chunkers 24

Speeds up the cutting process for a shorter working time. Ideal for marking out lines and removing large amounts of coat in mid-density coats.

REF.: T47075 SIZE: 7.5" TEETH: 24



Slalom Chunkers Curvy

With the exclusive shape of teeth and curved blades, these chunkers will make work fast and efficient, and allow for creating new forms.

REF.: T70975 SIZE: 7.5" TEETH: 24

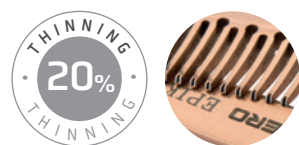




SCISSORS

06.5 Thinning Scissors

Scissors with teeth helping to blend and smooth cutting lines from the coat



Epika



Hypoallergenic coating with comfortable handling and a high thinning rate. Ideal for blending and finishing in medium and fine coats. Wide blade opening.

REF.: T48038 SIZE: 7" TEETH: 38



Onix



Powerful scissors to tackle any coat. High thinning rate for quick blending and a precise finish.

REF.: T50070 SIZE: 7" TEETH: 50



Space



Robust and resistant for working on dense coats. Low thinning rate for subtle blending.

REF.: T52070 SIZE: 7" TEETH: 46



Slalom Curvy



With the capacity to lightly blend, together with its curve and lightness, the Slalom Curvy is a breakthrough in blending scissors.

REF.: T48165 SIZE: 6.5" TEETH: 45
REF.: T70970 SIZE: 7" TEETH: 48





SCISSORS

06.6 Lefties

Designed for left-handed users respecting all the exclusive qualities of Artero right handed scissors



One



A reliable all-rounder suitable for medium and dense coats. Light, comfortable cutting, ideal for everyday use.

- REF.: T48160 SIZE: 6"
- REF.: T49165 SIZE: 6.5"
- REF.: T48375 SIZE: 7.5"



One



A reliable all-rounder suitable for medium and dense coats. Light, comfortable cutting, ideal for everyday use.

- REF.: T48260 SIZE: 6" TEETH: 30
- REF.: T49265 SIZE: 6.5" TEETH: 40
- REF.: T48475 SIZE: 7.5" TEETH: 50





Magnum Ergo

Powerful, able to withstand a lot of cutting pressure. Blades open widely and effortlessly. Accurate cutting for creating master lines.

REF.: T70770 SIZE: 7"



Fusion Curvy Black

With bevelled-edge blades for accurate facial and expression cutting. Symmetrical handles to control the opening of the blades. Aluminium handles for a lighter cut.

REF.: T70760 SIZE: 6"



One Curvy Lefty

An all-rounder capable of tackling any jobs on medium and dense coats. A very light and pleasant scissor to use, ideal for daily work in the salon.

REF.: T70880 SIZE: 8"



One Chunkers 27

The most versatile chunkers due to their size and teeth. Capable of marking out and defining cuts. With manual tension screw for easy adjustments.

REF.: T47170 SIZE: 7" TEETH: 27



Satin

Helps create outlines in everyday cutting and remove length in pre-cutting. The balance between the handles and blades makes these scissors very resilient.

REF.: T49455 SIZE: 5.5"
REF.: T49475 SIZE: 7.5"



One

A reliable all-rounder suitable for medium and dense coats. Light, comfortable cutting, ideal for everyday use.



- REF.: T48260 SIZE: 6" TEETH: 30
- REF.: T49265 SIZE: 6.5" TEETH: 40
- REF.: T48475 SIZE: 7.5" TEETH: 50



Elite

Ideal for dirty coats, pre-cutting and quick work, reliable scissors with a low thinning rate.



- REF.: T49065 SIZE: 6.5" TEETH: 46



Silicone Finger Rings

Set of 6 finger-rings. 3 different sizes of inner diameter: 18mm, 19mm and 20mm. Replaceable. The rings improve the grip of the scissors. As a result, we will put less strain on our scissors.

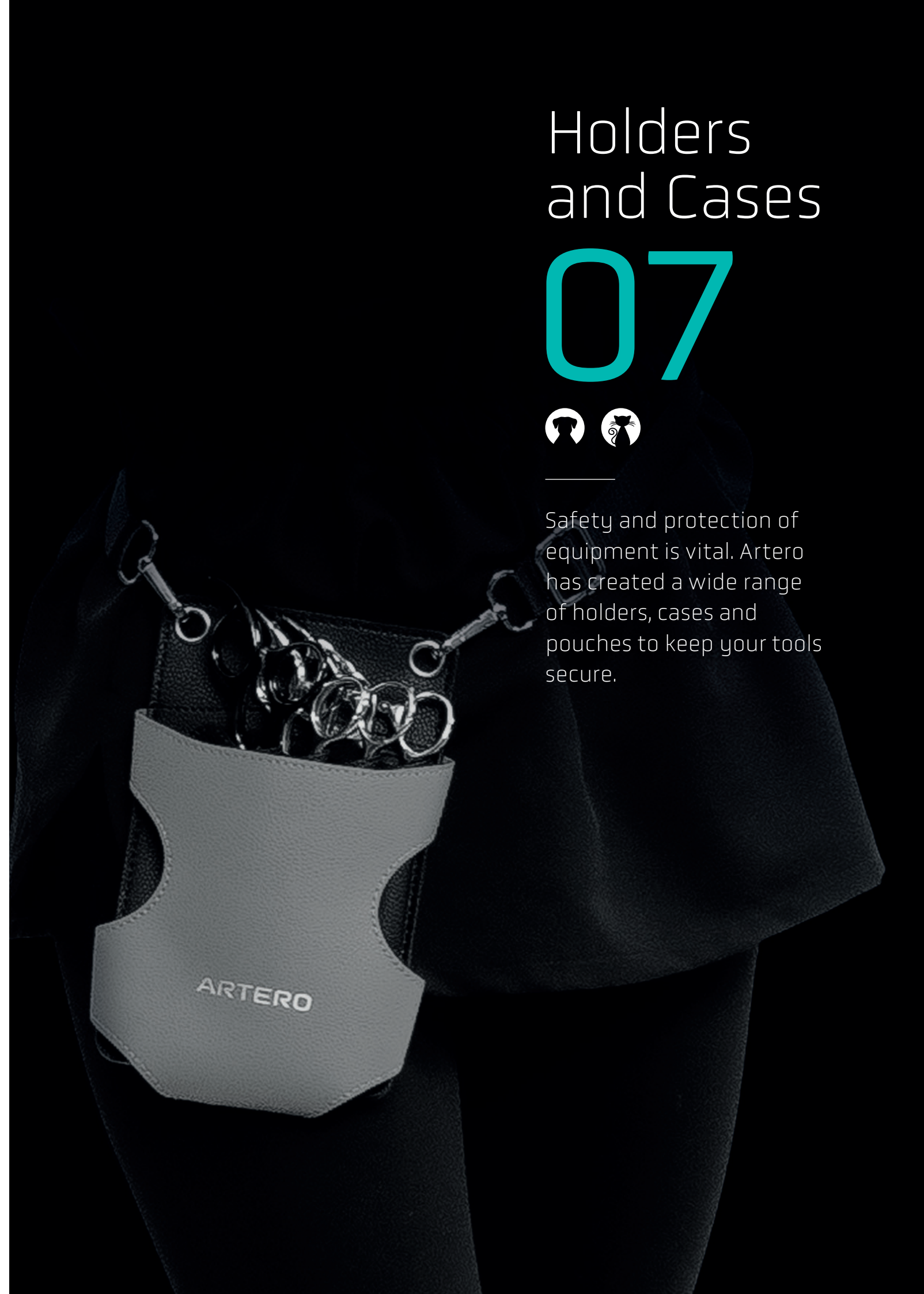
REF.: A248

07 Holders and Cases

07



Safety and protection of equipment is vital. Artero has created a wide range of holders, cases and pouches to keep your tools secure.





HOLDERS & CASES

07.1 Holders

Comfortable and practical, maximum protection for your equipment



Royale Waist-Holder

Waist or shoulder. 4 scissors compartments + 1 for combs or brushes. Includes belt.

- REF.: F398 ■
- REF.: F401 ■
- REF.: F399 ■
- REF.: F402 ■



Expert Green

Scissor Wrap

Roll-up wrap for scissors and stripping knives. With safety-tab. Elastic band closure. 11 compartments.

- REF.: F347 ■
- REF.: F391 ■
- REF.: F392 ■
- REF.: F393 ■



Expert Pink



Expert Light Blue



Expert Grey



Scissors Cases

Case for 20 scissors. Zip closure. Exterior material synthetic leather. Colour: Black.

REF.: MKTESTIJERA
MEASUREMENTS: 10.6" x 15"



Buckle Work Belt

Waist work belt. 4 scissor compartments and 2 brush compartments. Includes adjustable strap.

REF.: F343



Blades Wrap Roller

Roll-up wrap for all type of clipper blades (A5, A5 wide, Aesculap,...) 9 compartments. In 2 colors.

- REF.: F394 ■
- REF.: F395 ■



HOLDERS & CASES

07.2 Cases

Comfortable and practical,
maximum protection for your
equipment



Troya Backpack

Over 20 compartments. Protect and transport your tools. Adjustable, ergonomic and breathable. Comfortable and safe design.

REF. PAW: F234
REF. LOGO: F235



Tool Bag

Semi-rigid nylon case with handle. 3 compartments - 2 open compartments and 1 front compartment for scissors. Includes shoulder strap.

REF.: A572



ARTERO
Zen

PROFESSIONAL CLIPPER

The perfect balance between **power**
and **elegance**.

A clipper with character, able to face
any challenge. An essential ally for
groomers who make a difference.

artero.com

Inspiring Style

ARTERO

STYLING TEAM



MICHELLE BREEN

Grooming, to me, is the opportunity to bring out the best in each animal that I have the opportunity to work with, and competing is an extension of that, fueling the drive to constantly improve my craft.

LINDSEY DICKEN

Grooming for me is the opportunity to combine my love of art with my love for dogs, and to help dogs feel their best. When I compete, it's a chance to test my skills against the best in the industry, but at the end of the day it's a competition against myself and it drives me to become the best I can.

GRACE ADRIANI

Handstripping is my favorite grooming technique. I enjoy the challenge it presents and am glad to see that it is growing in popularity. I strive to always keep learning and improving. Becoming a competition groomer has allowed me to continue to learn and hone my grooming skills.



BARKLEIGH HONORS

GROOMING INDUSTRY AWARDS





artero USA



@artero_usa

For customer service, please call:
561-295-5328 or email
customer.service@artero.com



artero.com

DOWNLOAD CATALOG

REF.: Y297



8